

Wilkerson

PROPERTIES INC.

4505-4515 W. Loop 289

Single Story Office
Lubbock, TX
15,390 SF for Lease

Will Wilkerson
office 806.474.2210
cell 214.843.8221
Gordon Wilkerson
office 806.474.2207
cell 806.441.4307



Property Description

Single story office available in Southwest Crossing office park. Currently finished out as operations center with mix of small offices and open areas for cubicles. 15,390 SF maximum contiguous available. Will divide units as needed. New monument signage opportunity.

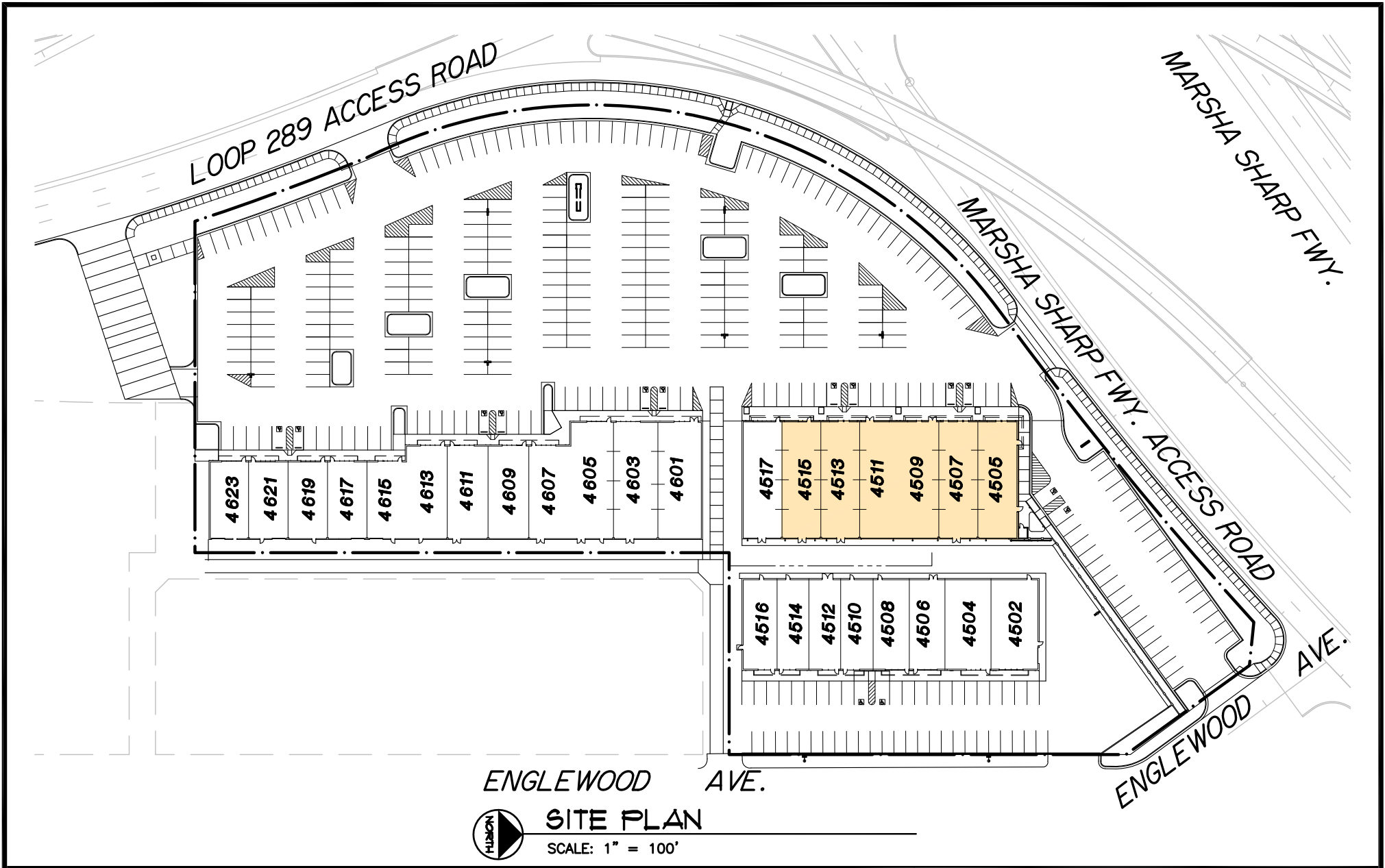
Location

Located in SE corner of W. Loop and Marsha Sharp intersection. Attractive location for your employees. Large selection of restaurants and shopping nearby

Rates

\$9.50/SF/year NNN
Tenant Improvements Negotiable

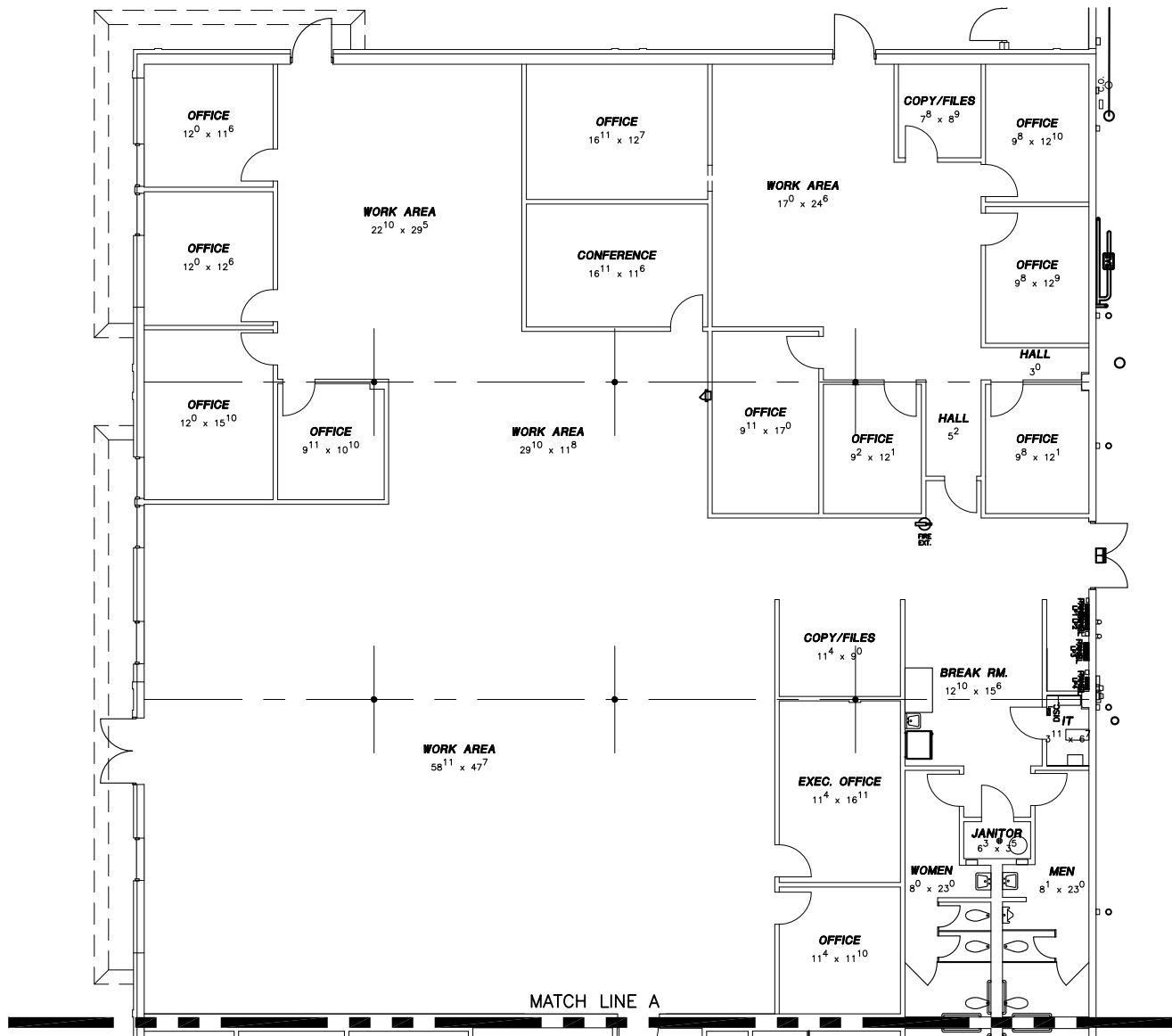




Commercial & Industrial
 Development, Management & Brokerage
 Phone: (806) 474-2223
 Fax: (806) 474-2216
 501 E. 66th Street
 Lubbock, Texas 79404

Southwest Crossing	Date: 12/05/2017	Rev:
	Drawn by: JWT	
Lubbock, Texas 79414	Checked by:	
G:\SWC\SWC-SITE.dwg, 85x11-H-T, 12/5/2017 3:32:01 PM		

A1



EXIST. FLOOR PLAN

SCALE: 1/16" = 1'-0" AREA = 8,184.4 S.F.

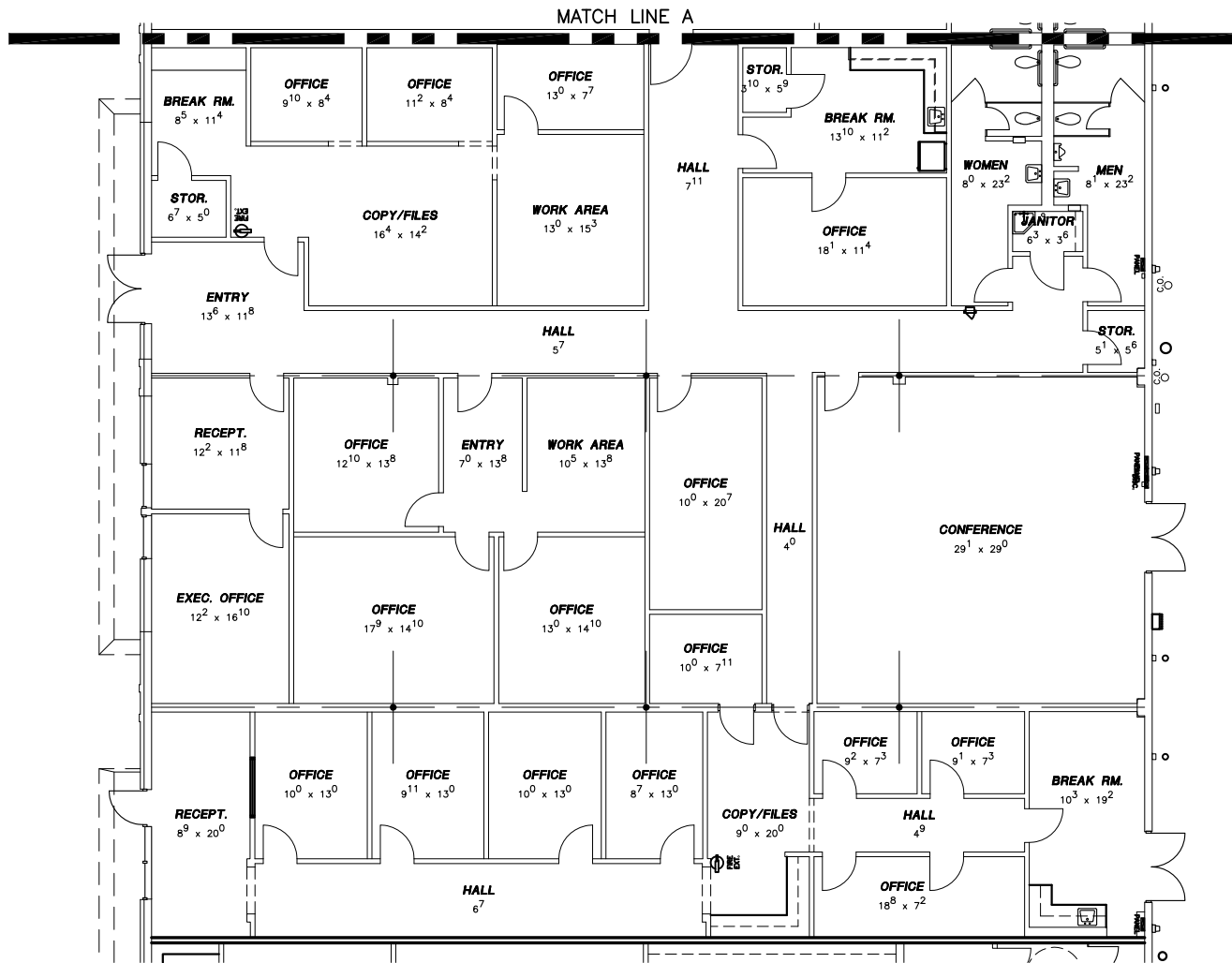
Wilkerson

PROPERTIES INC.

Commercial & Industrial
Development, Management & Brokerage
Phone: (806) 474-2223
Fax: (806) 474-2216
501 E. 66th Street
Lubbock, Texas 79404

Southwest Crossing	Date: 12/05/2017	Rev:
4505-4509 W. Loop 289	Drawn by: JWT, GP	
Lubbock, Texas 79414	Checked by:	

A2



EXIST. FLOOR PLAN

SCALE: 1/16" = 1'-0" AREA = 7,210.3 S.F.



Commercial & Industrial
Development, Management & Brokerage
Phone: (806) 474-2223
Fax: (806) 474-2216
501 E. 66th Street
Lubbock, Texas 79404

Southwest Crossing	Date: 12/05/2017	Rev:
4511-4515 W. Loop 289	Drawn by: JWT, GP	
Lubbock, Texas 79414	Checked by:	
G:\SWC\SWC-FLOOR.dwg, 4511-4515-FLOOR, 12/14/2017 4:07:11 PM		

A3