

# Wilkerson

PROPERTIES INC.

## 410 E. 56<sup>th</sup> St.

Industrial Warehouse  
Lubbock, TX  
27,823 SF for Lease

**Gordon Wilkerson**

office 806.474.2207

cell 806.441.4307

**Will Wilkerson**

office 806.474.2210

cell 214.843.8221



## Property Description

Concrete construction dock high warehouse. Large 20'x16' door to enclosed truck bay. 10'x10' overhead door on north side of building. Several doors could be added if necessary. 18' clear height throughout building. Great natural light from 16 large skylights.

## Location

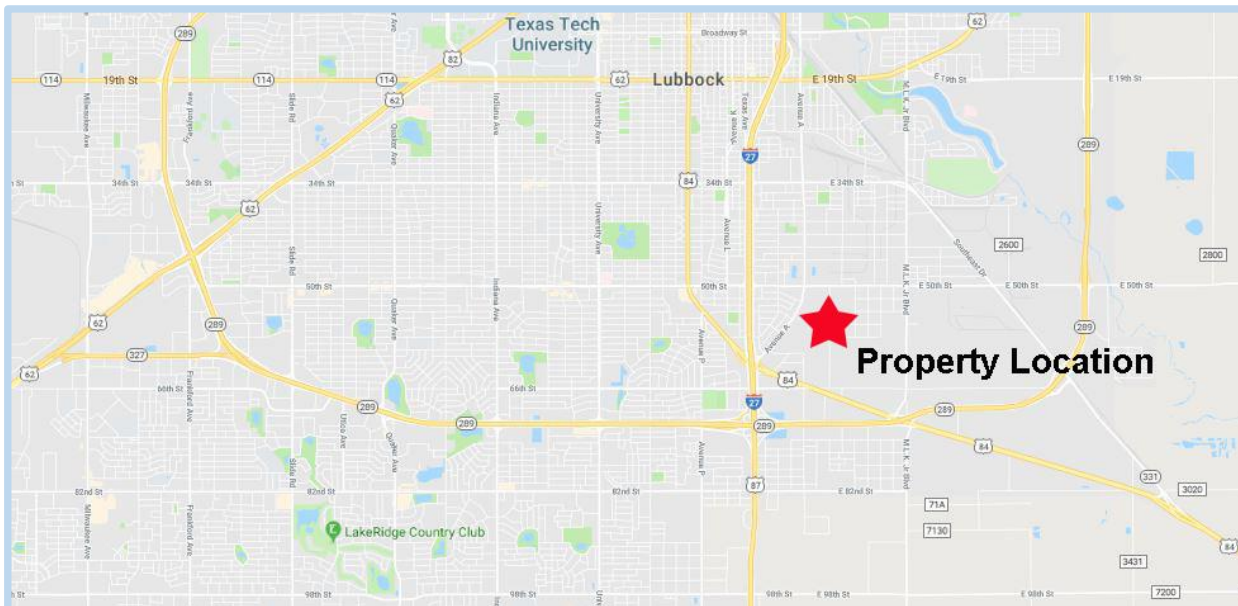
Located on Elm St. in major industrial neighborhood. Tenants nearby include Labatt, FedEx, Chep, Ashley Furniture, Ben E. Keith and Bayer. Good access from I-27 and Slaton Hwy.

## Rates

\$3.00/SF/year NNN

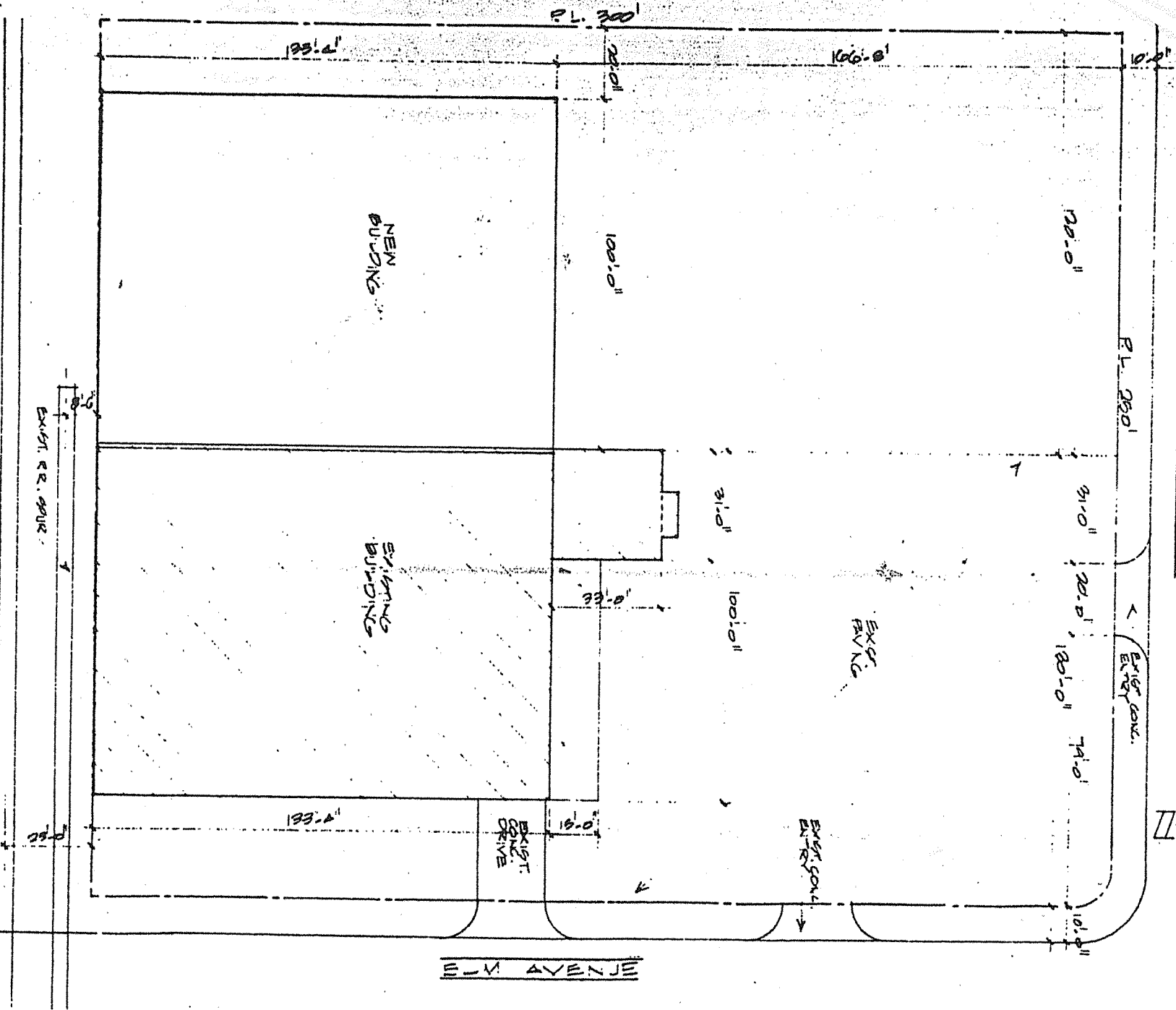
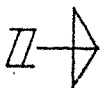
\$6,950/month NNN

Annual taxes currently \$0.20/SF



101 E W  
SUN COAST BKG AND BRCKING Top Floor - 230 E 324

BG + 1 STREET



SITE PLAN  
SCALE 1"=10'

WAREHOUSE - 24,600 SqFt,  
OFFICE 1,023 "  
Lot 71,500 "

PLAT SHOWING SURVEY OF

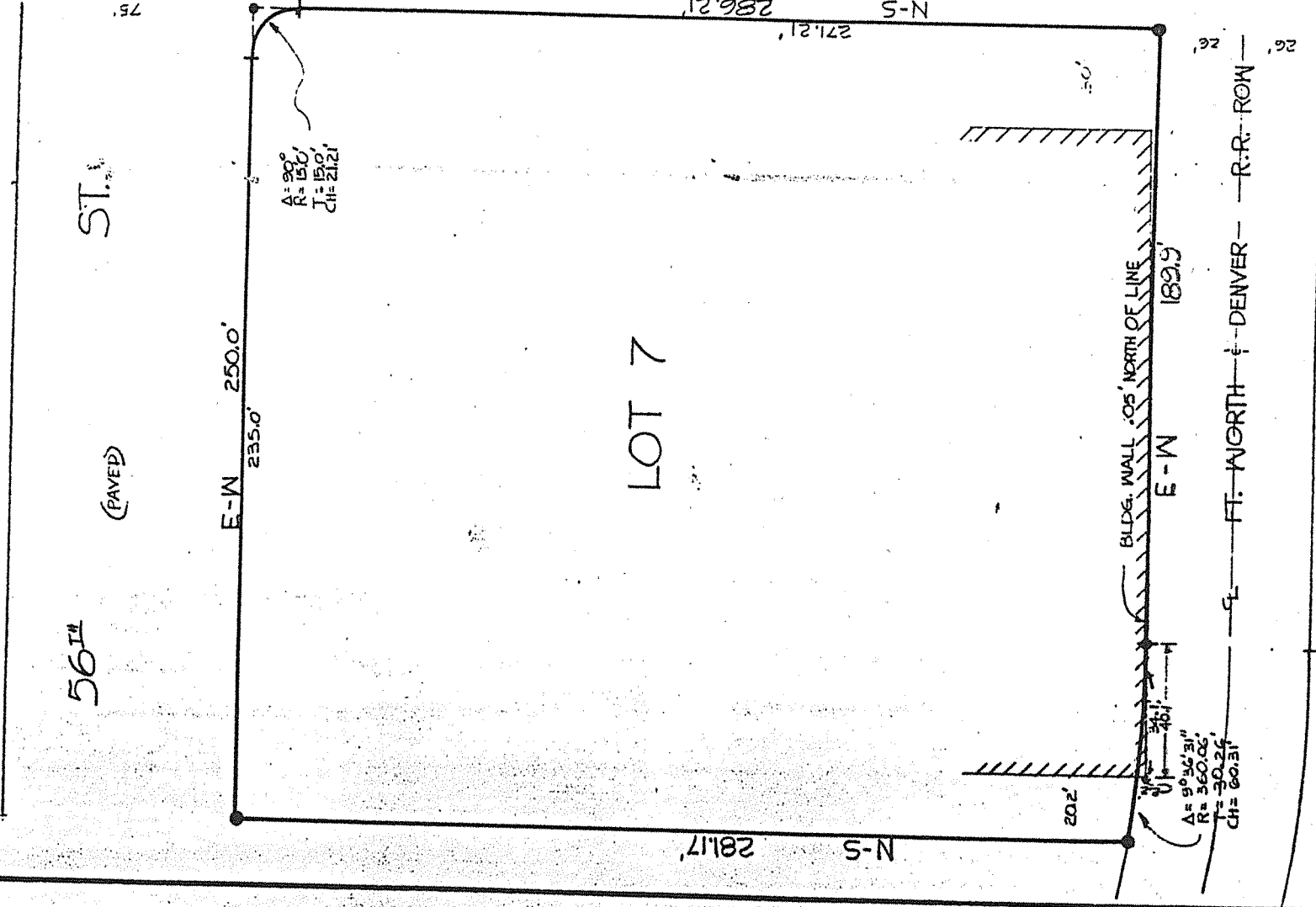
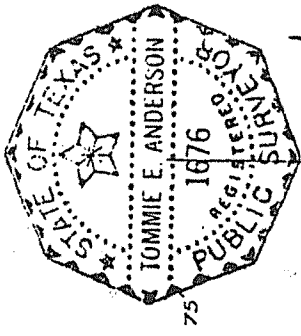
LOT 7

BURLINGTON INDUSTRIAL  
ADDITION NO. 3  
to the City of Lubbock,  
Lubbock County, Texas

Certified correct.  
January 8, 1985

*Tommy E. Anderson*

Registered Public Surveyor  
Lubbock, Texas



56<sup>TH</sup>

ST.

(PAVED)

E-W 250.0'

235.0'

A=90°  
R=150'  
T=150'  
CH=212.1'

LOT 7

2811.7' N-S

271.21' N-S  
286.21'

ELM

(PAVED)

202'

BLDG. WALL .05' NORTH OF LINE

E-W

1829.5'

A=90°42'31\"/>  
R=360.00'  
T=30.24'  
CH=60.31'

5' FT. NORTH - DENVER - R.R. ROW

26'