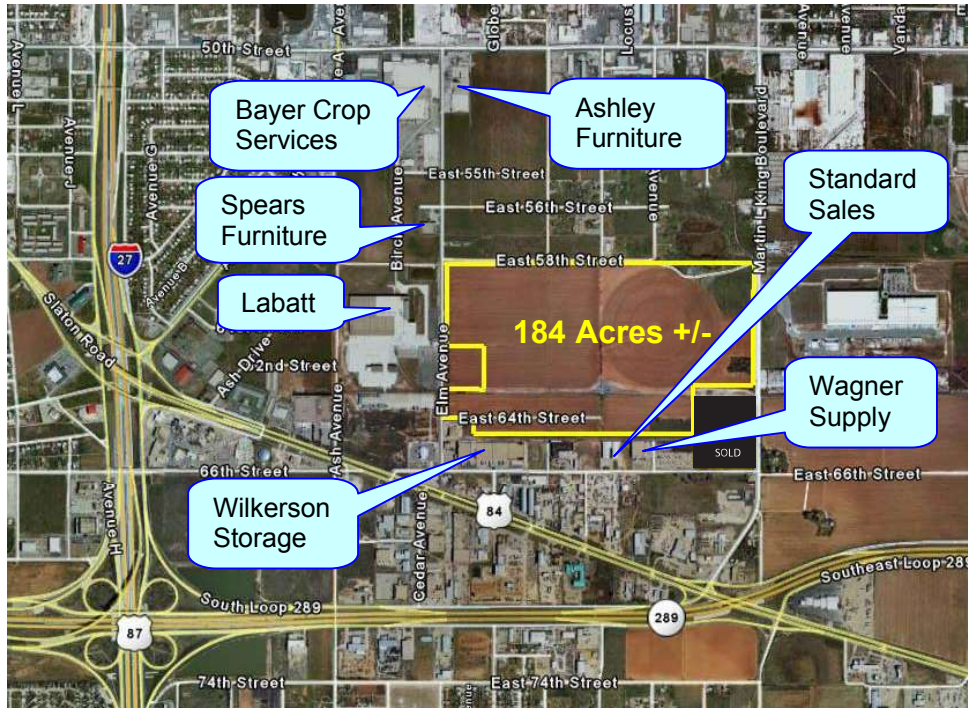


FOR SALE Industrial Land Near US 84 and MLK Blvd Lubbock, TX



Unit Size:	<ul style="list-style-type: none">• Tracts from 1 to 184 acres +/-
Zoning:	<ul style="list-style-type: none">• M-1
Features:	<ul style="list-style-type: none">• Rail service available• Good access to I-27 & Loop 289
Pricing:	<ul style="list-style-type: none">• Call for specifics• Varies according to size and location of tract
Description:	<ul style="list-style-type: none">• Excellent Industrial site• Other companies in area include Bayer Crop Science, Wagner Supply, Ashley Furniture, Labatt Food Service, Standard Sales, Spears Furniture and Wilkerson Storage Company.

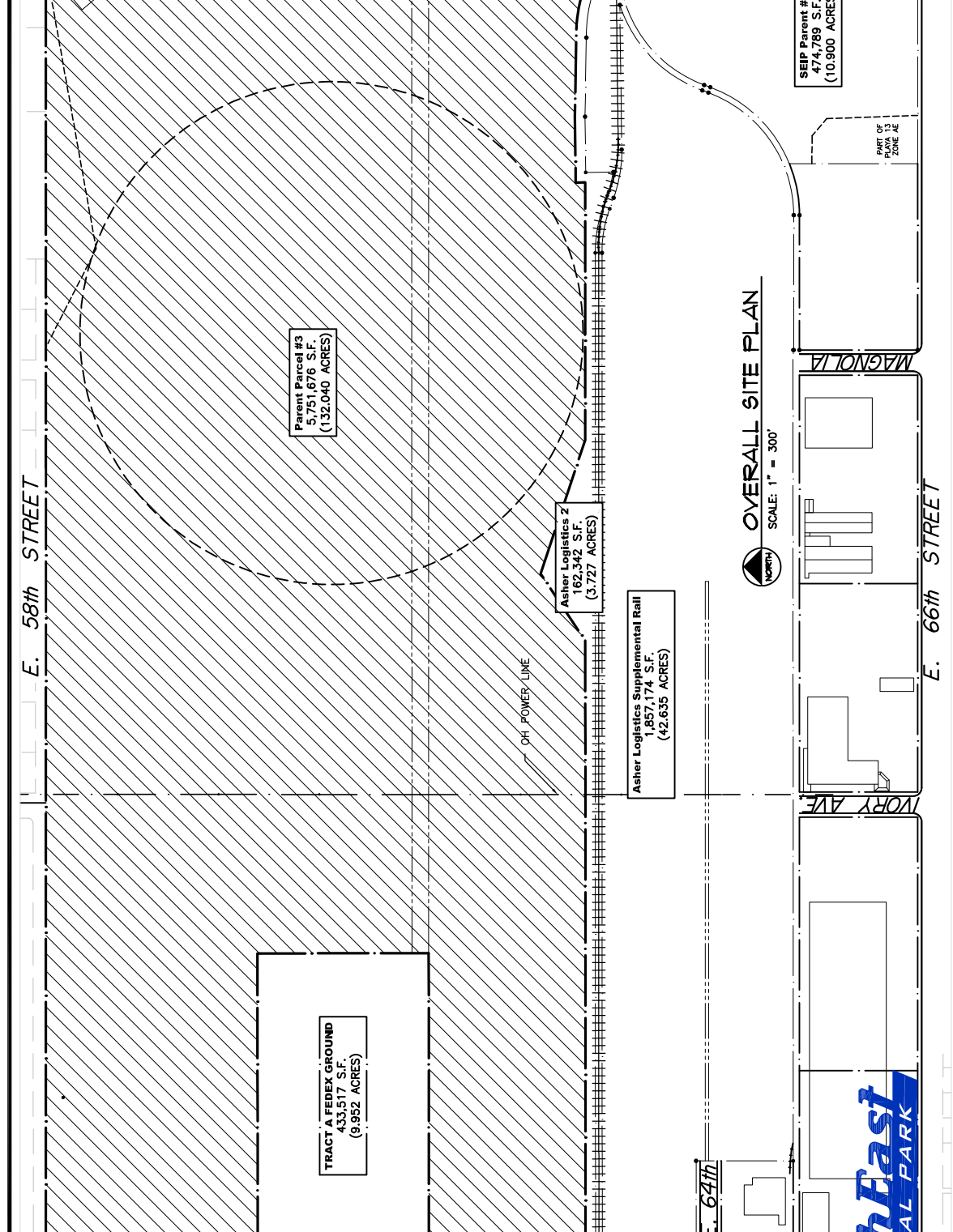
Commercial & Industrial Construction, Development, Management & Brokerage

Gordon Wilkerson
Mobile: 806-441-4307
Home: 806-794-7640
gwilk@wilkersonstorage.com

David Wilkerson
Mobile: 806-441-2200
Home: 806-785-2087
davewilk@wilkersonproperties.com

www.wilkersonproperties.com

Any information given herewith is obtained from sources we consider reliable. However, we are not responsible for misstatement of facts, errors, omissions, prior sale, withdrawal from market, modification of mortgage commitment, terms and conditions or change in price without notice. The information supplied herein is for informational purposes only and shall not constitute a warranty or assurance that said information is correct. Any person intending to rely upon the information supplied herein should verify said information independently.



Commercial & Industrial Development, Management & Brokerage Phone: (806) 474-2223 Fax: (806) 474-2216 501 E. 66th Street Lubbock, Texas 79404		SouthEast Industrial Park Lubbock, Texas 79404 G:\SEIP\SEIP-SITE.dwg, OVERALL_9/22/2014 1:39:21 PM	Date: 09/22/2014 Drawn by: JMT Checked by:	Notes:	Area:
Wikerson PROPERTIES INC.					C1