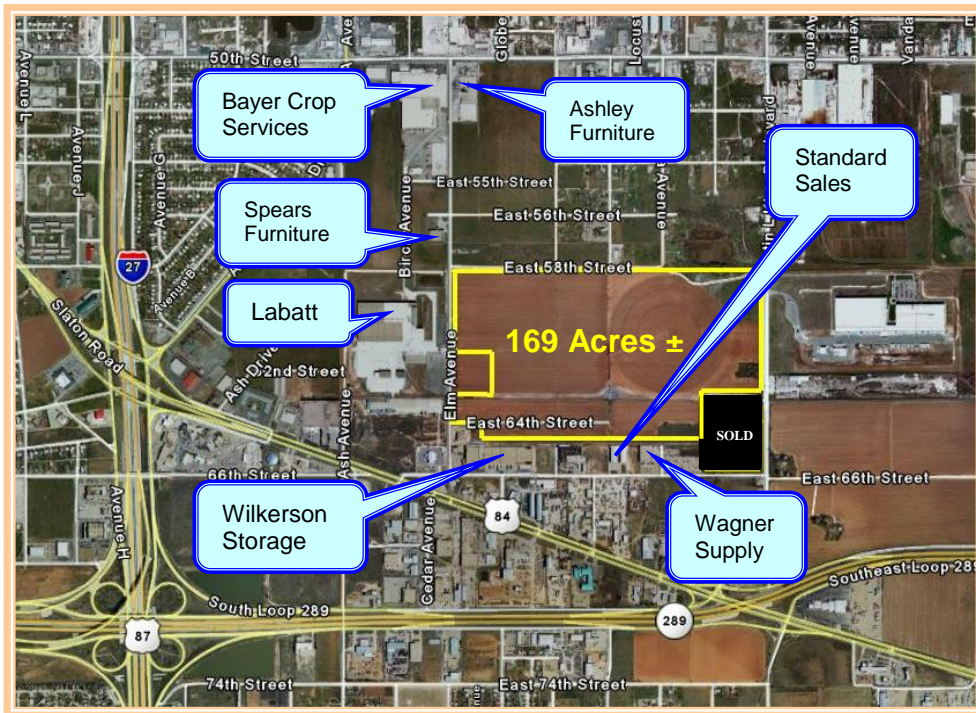


## FOR SALE Industrial Land Near US 84 and MLK Blvd Lubbock, TX



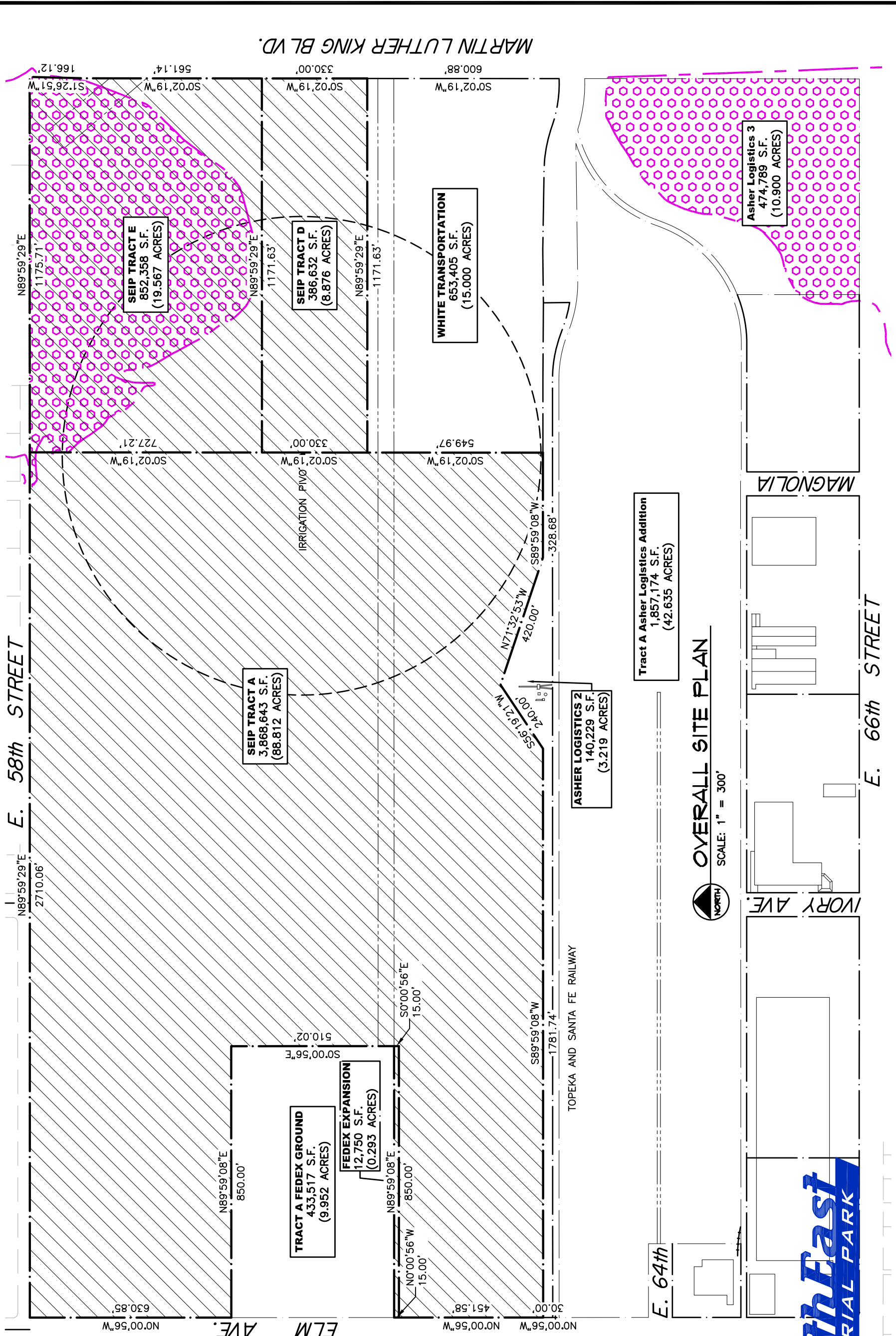
- Unit Size:**
- Tracts from 1 to 169 acres ±
- Zoning:**
- M-1
- Features:**
- Rail service available
  - Good access to I-27 & Loop 289
- Pricing:**
- Call for specifics
  - Varies according to size and location of tract
- Description:**
- Excellent Industrial site
  - Other companies in area include Bayer Crop Science, Wagner Supply, Ashley Furniture, Labatt Food Service, Standard Sales, Spears Furniture and Wilkerson Storage Company.

### Commercial & Industrial Construction, Development, Management & Brokerage

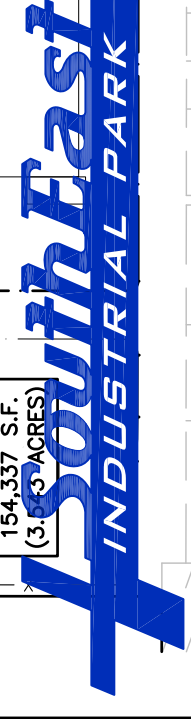
Gordon Wilkerson  
Mobile: 806-441-4307  
Home: 806-794-7640  
gwilk@wilkersonstorage.com


David Wilkerson  
Mobile: 806-441-2200  
Home: 806-785-2087  
davewilk@wilkersonproperties.com

[www.wilkersonproperties.com](http://www.wilkersonproperties.com)



**OVERALL SITE PLAN**  
SCALE: 1" = 300'



Commercial & Industrial Development, Management & Brokerage Phone: (806) 474-2223 Fax: (806) 474-2216 501 E. 66th Street Lubbock, Texas 79404		SouthEast Industrial Park	Date: 03/14/2017	Rev:	Notes:
 <p><b>Wilkerson</b> PROPERTIES INC.</p>		Lubbock, Texas 79404	Drawn by: JWT		
		G:\SEIP\SEIP-SITE.dwg, OVERALL, 3/14/2017 9:43:40 AM	Checked by:		
					Area:
					<b>C1</b>