

Wilkerson

PROPERTIES, INC.

Commercial & Industrial
Development, Management, and Brokerage

GORDON WILKERSON
MOBILE: 806.441.4307
HOME: 806.794.7640

MAIN OFFICE
PHONE: 806.474.2200
FAX: 806.474.2216

DAVID WILKERSON
MOBILE: 806.441.2200
HOME: 806.785.2087

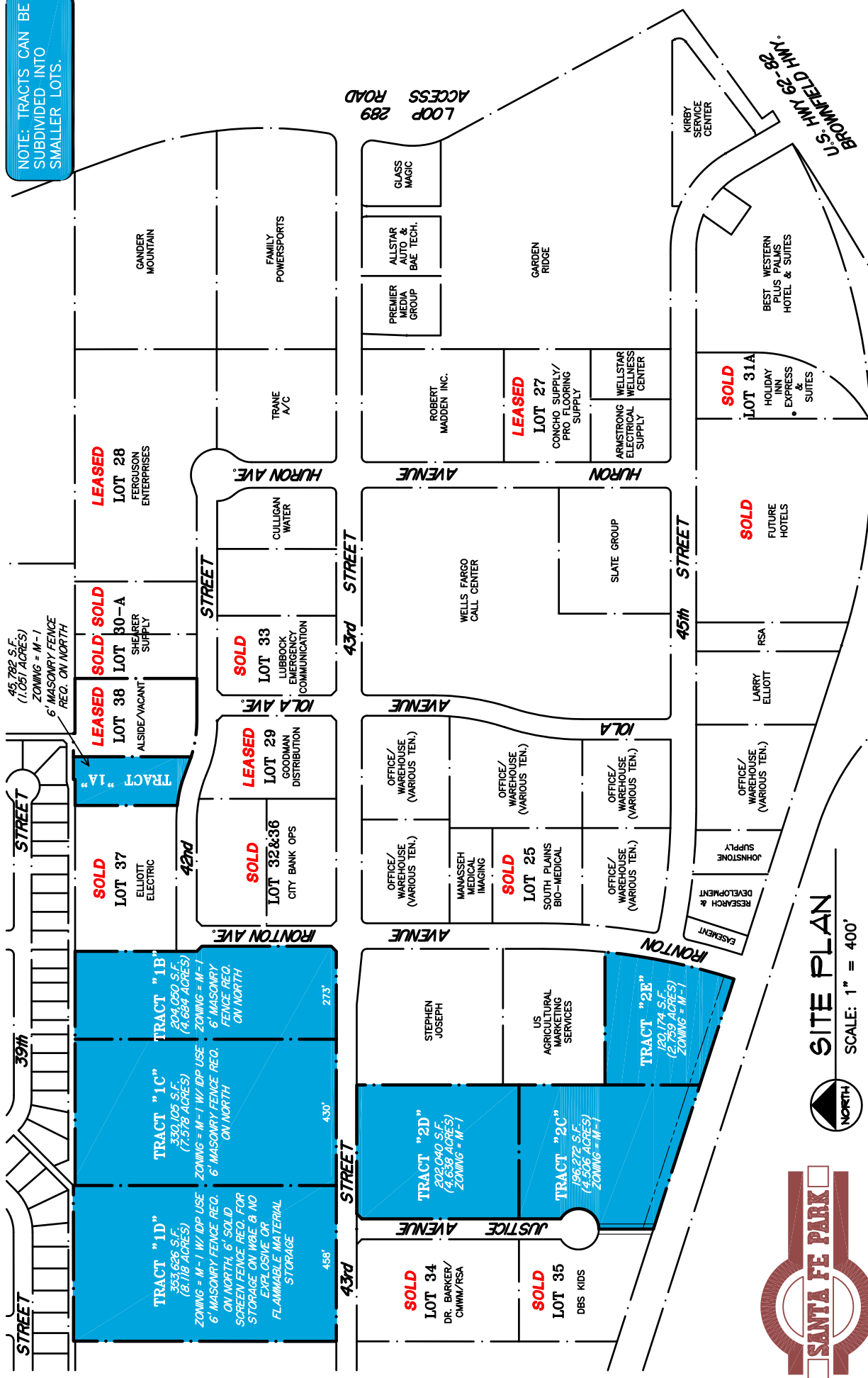
EXCELLENT COMMERCIAL/INDUSTRIAL LAND Santa Fe Park Lubbock, TX

- Tract Size:** Tracts from one to twenty acres
- Zoning:**
- IDP & M-1
- Features:**
- Good access to Loop 289 & Marsha Sharp Freeway (Brownfield Hwy)
- Pricing:**
- Call for specifics
 - Varies according to size and location of tract
- Description:**
- Excellent commercial/industrial site in West Lubbock
 - Other companies in area include Sam's Wholesale Club, Bayer CropScience, Wells-Fargo Customer Service Center, Robert Madden Inc., Culligan, USDA, Stephen Joseph, XPEDX, Ferguson Enterprises, Professional Flooring Supply, and Goodman Distribution.

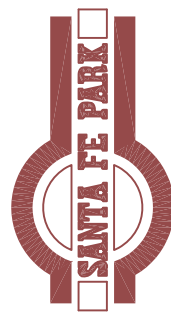
For Further Information Call Gordon Wilkerson:

Office: (806) 474-2207
Mobile: (806) 441-4307
Fax: (806) 474-2216

NOTE: TRACTS CAN BE SUBDIVIDED INTO SMALLER LOTS.



SITE PLAN
SCALE: 1" = 400'



Commercial & Industrial
Development, Management & Brokerage
Phone: (806) 474-2223
Fax: (806) 474-2216
501 E. 66th Street
Lubbock, Texas 79404

Wilkerson
PROPERTIES INC.

SANTA FE PARK
Lubbock, Texas
Date: 03/02/2017
Drawn by: JWT, GP
Checked by:
Rev:

A1