

Wilkerson

PROPERTIES INC.

7825 Olive Avenue

Industrial Warehouse
Lubbock, TX
43,100 SF for Sale

Gordon Wilkerson
office 806.474.2207
cell 806.441.4307
Bobby McQueen
office 806.748.7100
cell 806.781.7100

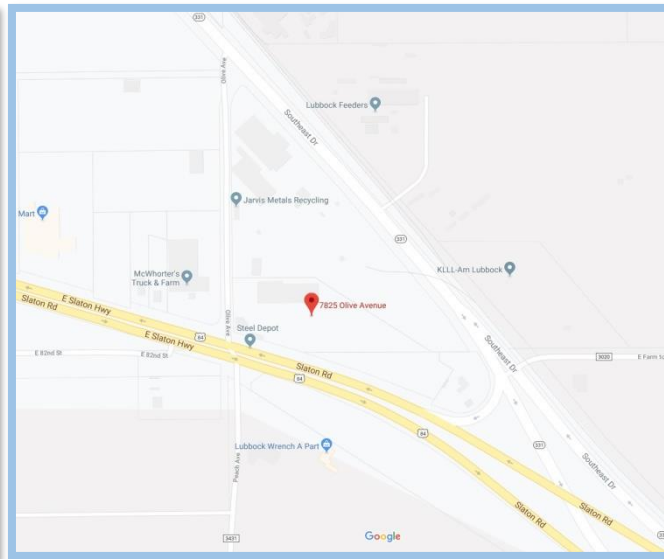


Property Description

Facility is comprised of 39,000 SF of ground level warehouses large doors and 4,100 SF of office. The lot is approximately 10 acres.

Location

Located at the intersection of Olive Avenue and US 84 in Southeast Lubbock. Tenants nearby include Steel Depot and Jarvis Metals Recycling.



Rates

Sale Price: \$2,400,000

Wilkerson

PROPERTIES INC.

7825 Olive Avenue

Industrial Warehouse

Lubbock, TX

43,100 SF for Lease

Gordon Wilkerson

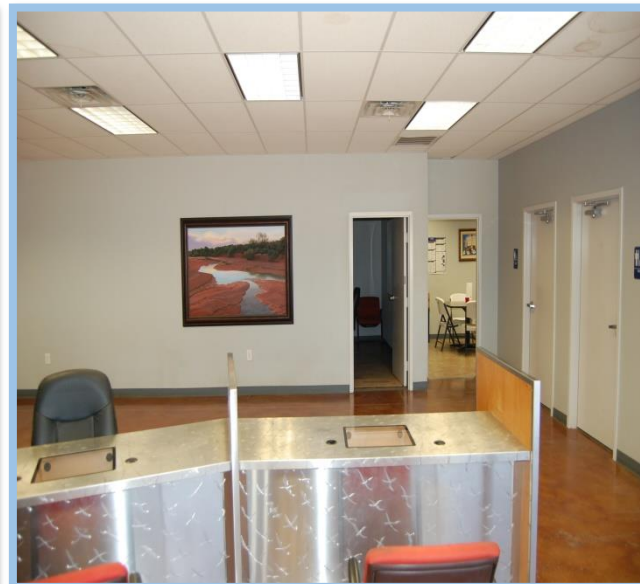
office 806.474.2207

cell 806.441.4307

Bobby McQueen

office 806.748.7100

cell 806.781.7100



Wilkerson

PROPERTIES INC.

7825 Olive Avenue

Industrial Warehouse

Lubbock, TX

43,100 SF for Lease

Gordon Wilkerson

office 806.474.2207

cell 806.441.4307

Bobby McQueen

office 806.748.7100

cell 806.781.7100



Wilkerson

PROPERTIES INC.

7825 Olive Avenue

Industrial Warehouse

Lubbock, TX

43,100 SF for Lease

Gordon Wilkerson

office 806.474.2207

cell 806.441.4307

Bobby McQueen

office 806.748.7100

cell 806.781.7100

