

# Wilkerson

PROPERTIES INC.

## 7825 Olive Avenue

Industrial Warehouse  
Lubbock, TX  
43,100 SF for Lease

**Gordon Wilkerson**

office 806.474.2207

cell 806.441.4307

**Bobby McQueen**

office 806.748.7100

cell 806.781.7100

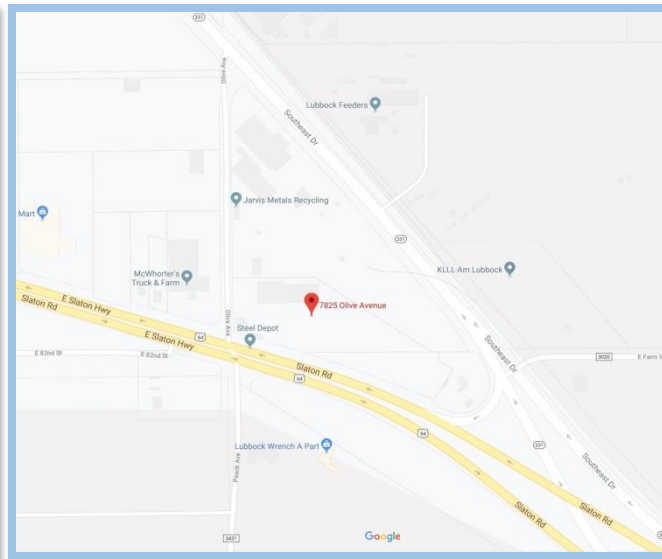


## Property Description

Facility is comprised of 39,000 SF of ground level warehouses large doors and 4,100 SF of office. The lot is approximately 10 acres.

## Location

Located at the intersection of Olive Avenue and US 84 in Southeast Lubbock. Tenants nearby include Steel Depot and Jarvis Metals Recycling.



## Rates

Base Rent: \$20,000/Month, NNN  
(Tenant also responsible property taxes and insurance.)

# Wilkerson

PROPERTIES INC.

## 7825 Olive Avenue

Industrial Warehouse

Lubbock, TX

43,100 SF for Lease

**Gordon Wilkerson**

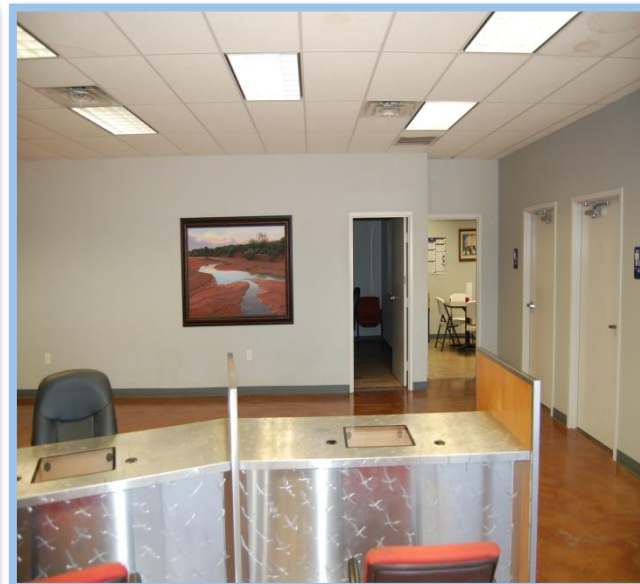
office 806.474.2207

cell 806.441.4307

**Bobby McQueen**

office 806.748.7100

cell 806.781.7100





# Wilkerson

PROPERTIES INC.

## 7825 Olive Avenue

Industrial Warehouse

Lubbock, TX

43,100 SF for Lease

**Gordon Wilkerson**

office 806.474.2207

cell 806.441.4307

**Bobby McQueen**

office 806.748.7100

cell 806.781.7100





# Wilkerson

PROPERTIES INC.

## 7825 Olive Avenue

Industrial Warehouse

Lubbock, TX

43,100 SF for Lease

**Gordon Wilkerson**

office 806.474.2207

cell 806.441.4307

**Bobby McQueen**

office 806.748.7100

cell 806.781.7100

