

Wilkerson

PROPERTIES INC.

5824 Elm Avenue

Industrial Warehouse
Lubbock, TX
238,655 SF for Lease

Gordon Wilkerson
office 806.474.2207
cell 806.441.4307
Will Wilkerson
office 806.474.2210
cell 214.843.8221



Property Description

Facility is comprised of 223,287 SF of warehouse and 7,701 SF of office/storage space on first floor, additionally there is 7,767 SF of storage space on second floor. Features include sprinkler system throughout, guard station at entrance, full perimeter security fence, pallet storage above overhead door, and dock high tilt wall construction. The facility has 26' clear ceiling height and 30 exterior overhead doors.



Location

Located on Elm Avenue. Tenants nearby include FedEx, Veritiv, and Mattress Firm. Good access to Loop 289, US 84 and Interstate 27.

Rates

Base Rent: \$3.00/SF/Year, NNN
Estimated NNN charges: \$0.53
per SF

Wilkerson

PROPERTIES INC.

5824 Elm Avenue

Industrial Warehouse

Lubbock, TX

238,655 SF for Lease

Gordon Wilkerson

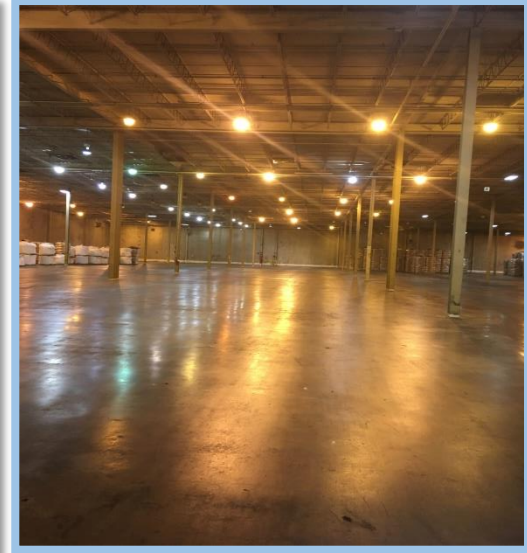
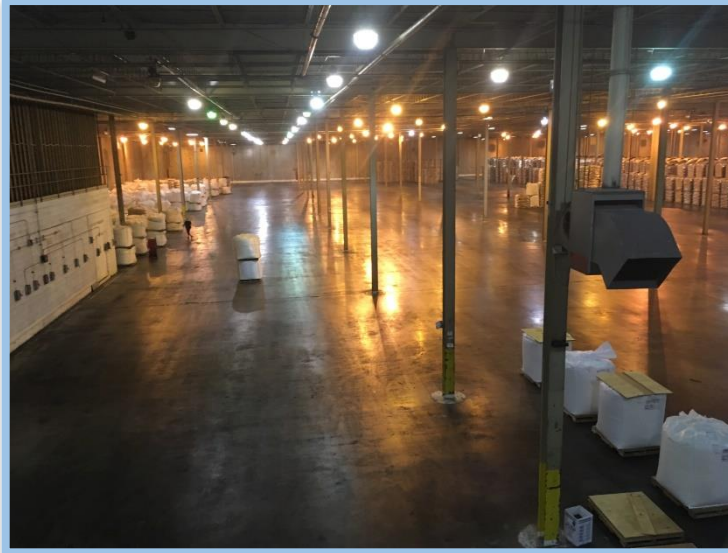
office 806.474.2207

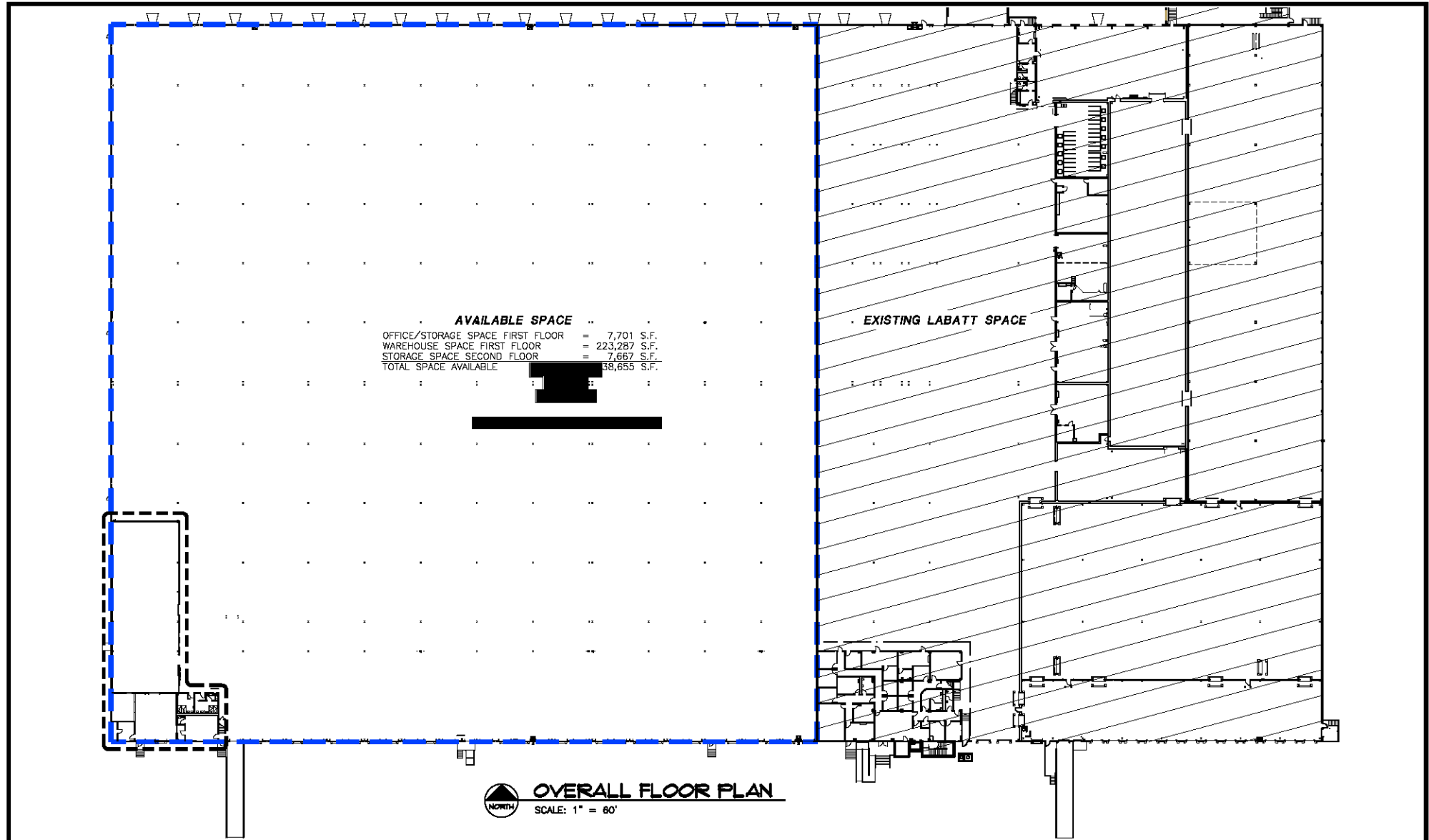
cell 806.441.4307

Will Wilkerson

office 806.474.2210

cell 214.843.8221



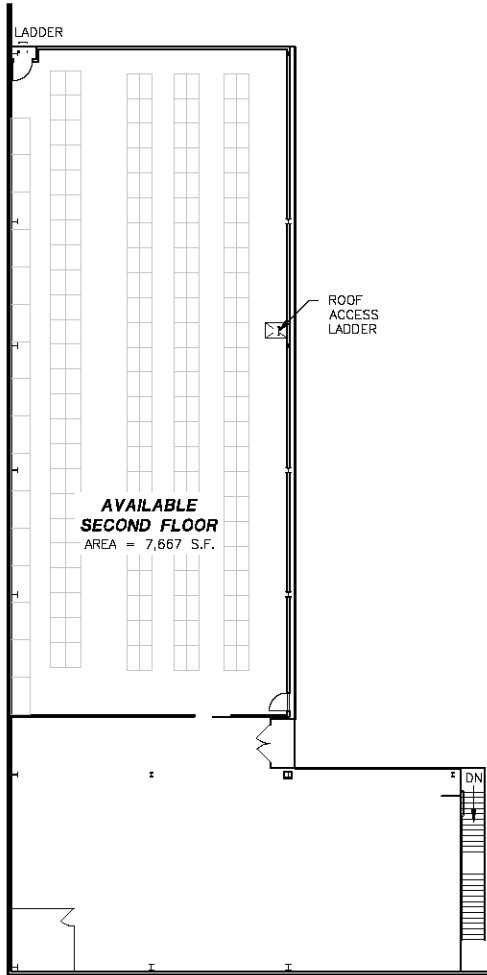


Wilkerson
PROPERTIES INC.

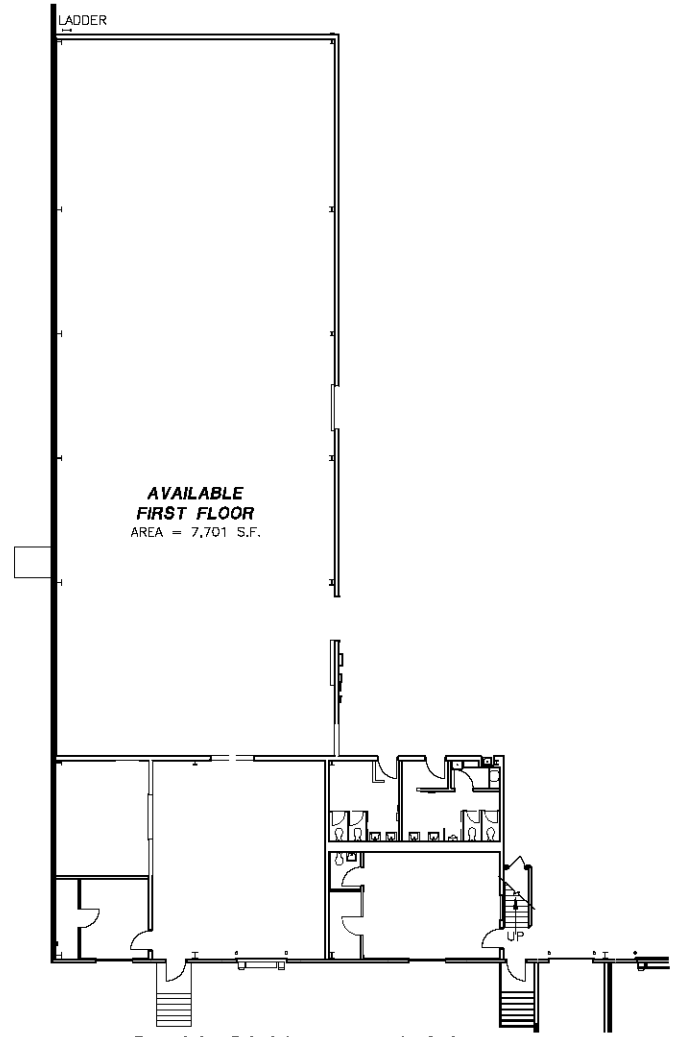
Commercial & Industrial
Development, Management & Brokerage
Phone: (806) 474-2223
Fax: (806) 474-2216
501 E. 66th Street
Lubbock, Texas 79404

Vacant Space	Date: 11/02/2010	Rev:	Notes:	Area:
5824 Elm	Drawn by: JWT, JMS			
Lubbock, Texas 79404	Checked by:			

A1



2
A2 **SECOND FLOOR PLAN**
SCALE: 1" = 20'



1
A2 **FIRST FLOOR PLAN**
SCALE: 1" = 20'

Wilkerson PROPERTIES INC.	Commercial & Industrial Development, Management & Brokerage Phone: (806) 474-2223 Fax: (806) 474-2216 501 E. 66th Street Lubbock, Texas 79404	Vacant Space	Date: 11/02/2010	Rev:	Notes:	Area:	A2
		5824 Elm	Drawn by: JWT, JMS				
		Lubbock, Texas 79404	Checked by:				

5824 Elm Label Label Available.dwg, 10, 08/16/11, 11:47:30 AM