

Wilkerson

PROPERTIES INC.

Crawford Austin Business Park

2,100 SF-Ground Level Flex Space
328 E. 40th St. Lubbock, TX 79404

Will Wilkerson

cell 214.843.8221

Gordon Wilkerson

office 806.474.2207

cell 806.441.4307



Property Summary

2,100 SF of renovated warehouse space just finished and ready for occupancy. Concrete construction building. New office/reception area with bathroom and janitor closet attached (see floor plan). Whiteboxed warehouse space with great lighting. Gas heater in warehouse keeps space warm in winter. New overhead door in rear of space. Large signage area above front of space. Great lighting at night with quality tenants in space. Very large parking lot.



Location

Prime Industrial Location at intersection of 40th Street and Ave. A. Easy access to I-27 and Loop 289

Lease Information

\$1000/month, discounts available for long term leases
Tenant responsible for electric, water and gas

Wilkerson

PROPERTIES INC.

Crawford Austin Business Park

2,100 SF-Ground Level Flex Space
328 E. 40th St. Lubbock, TX 79404

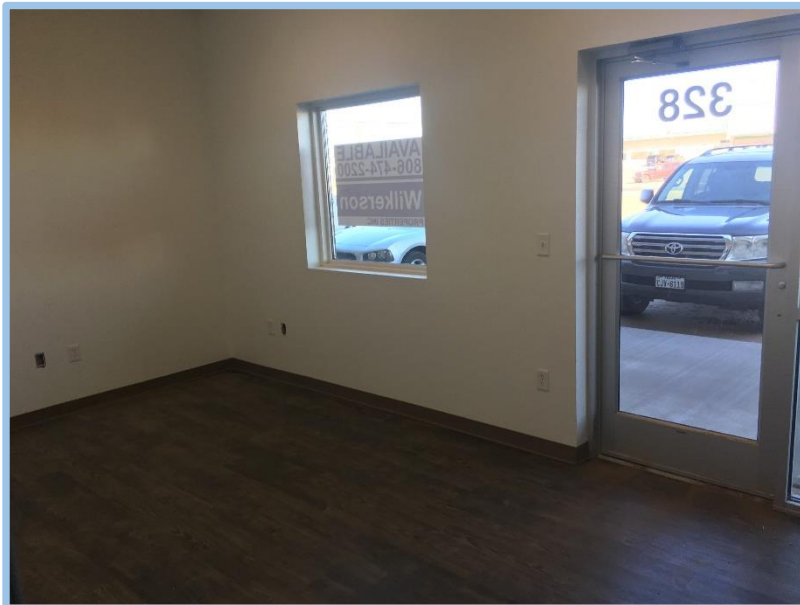
Will Wilkerson

cell 214.843.8221

Gordon Wilkerson

office 806.474.2207

cell 806.441.4307



Wilkerson

PROPERTIES INC.

Crawford Austin Business Park

2,100 SF-Ground Level Flex Space
328 E. 40th St. Lubbock, TX 79404

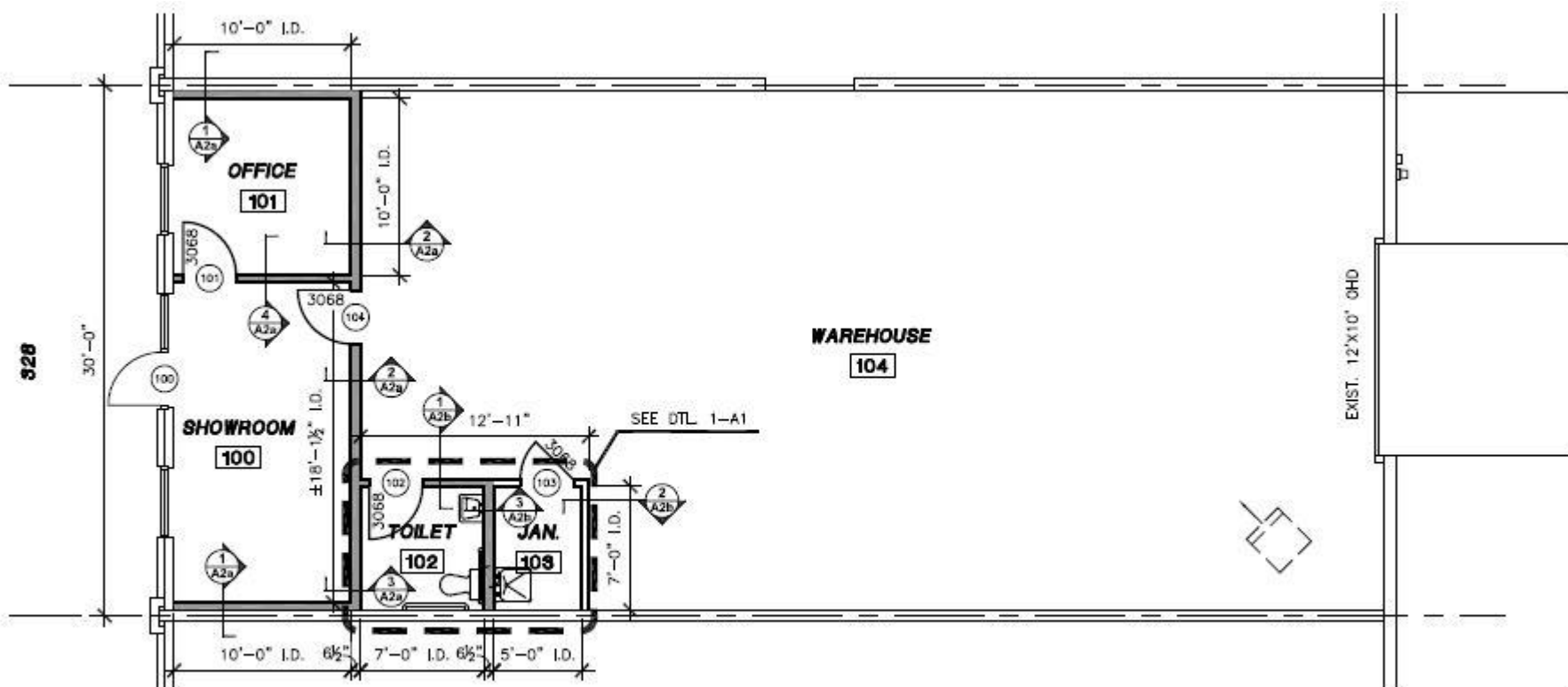
Will Wilkerson

cell 214.843.8221

Gordon Wilkerson

office 806.474.2207

cell 806.441.4307



FLOOR PLAN

SCALE: 1/8" = 1'-0"