

Wilkerson

PROPERTIES INC.

4901 Avenue A

Former Truck Dealership/Repair Facility
Lubbock, TX
39,385 SF for Lease

Gordon Wilkerson
office 806.474.2207
cell 806.441.4307

Will Wilkerson
office 806.474.2210
cell 214.843.8221



Property Description

- 24,000 SF Shop with 24 Overhead Doors
- 39,385 SF Total Building
- 4.79 AC Lot
- Large Showroom
- Paint Booth
- Crane System
- Wash Facility
- Numerous Private Sales Offices
- Breakroom Area
- Driver's Lounge
- Ample Parking

Location

Located at 50th and Avenue A, a prime location for trucking related businesses. High visibility and good access. Businesses nearby include 84 Lumber, Stripes, Gebo's, Fleetpride, South Plains International and West Texas Peterbilt

Rates

\$17,500 per Month, NNN



Wilkerson

PROPERTIES INC.

4901 Avenue A

Former Truck Dealership/Repair Facility

Lubbock, TX

39,385 SF for Lease

Gordon Wilkerson

office 806.474.2207

cell 806.441.4307

Will Wilkerson

office 806.474.2210

cell 214.843.8221



Wilkerson

PROPERTIES INC.

4901 Avenue A

Former Truck Dealership/Repair Facility

Lubbock, TX

39,385 SF for Lease

Gordon Wilkerson

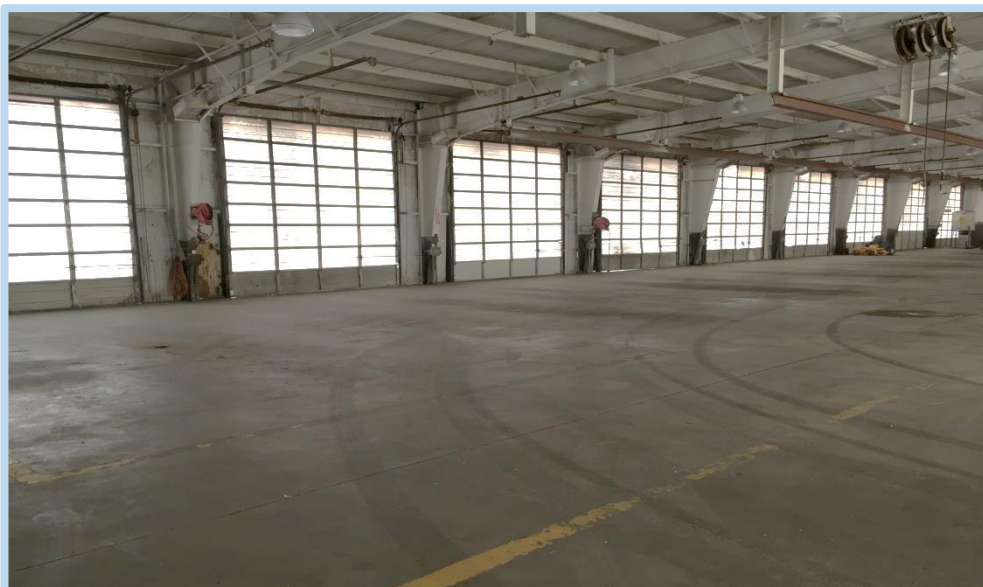
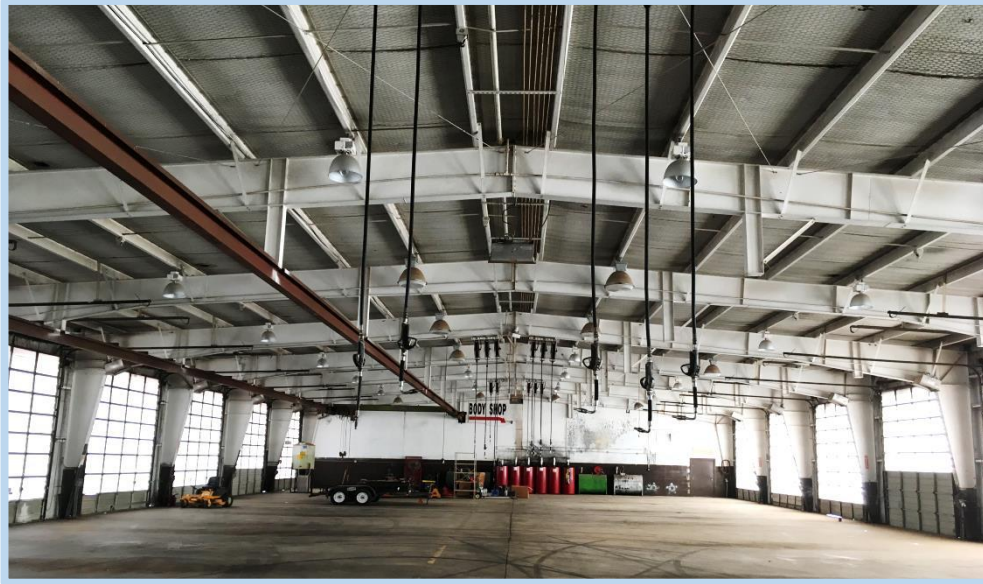
office 806.474.2207

cell 806.441.4307

Will Wilkerson

office 806.474.2210

cell 214.843.8221



Wilkerson

PROPERTIES INC.

4901 Avenue A

Former Truck Dealership/Repair Facility

Lubbock, TX

39,385 SF for Lease

Gordon Wilkerson

office 806.474.2207

cell 806.441.4307

Will Wilkerson

office 806.474.2210

cell 214.843.8221

