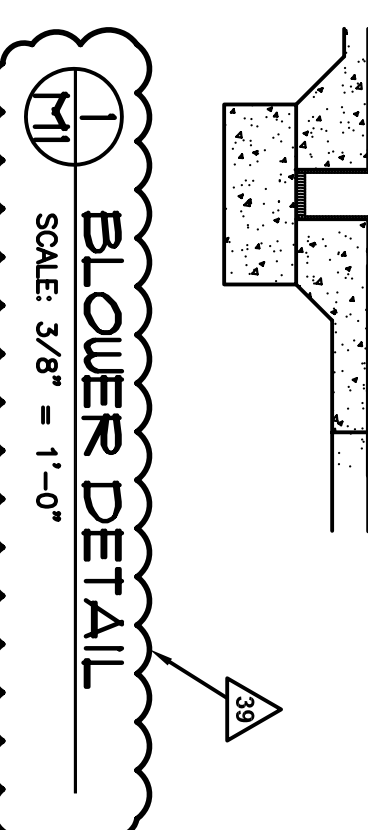
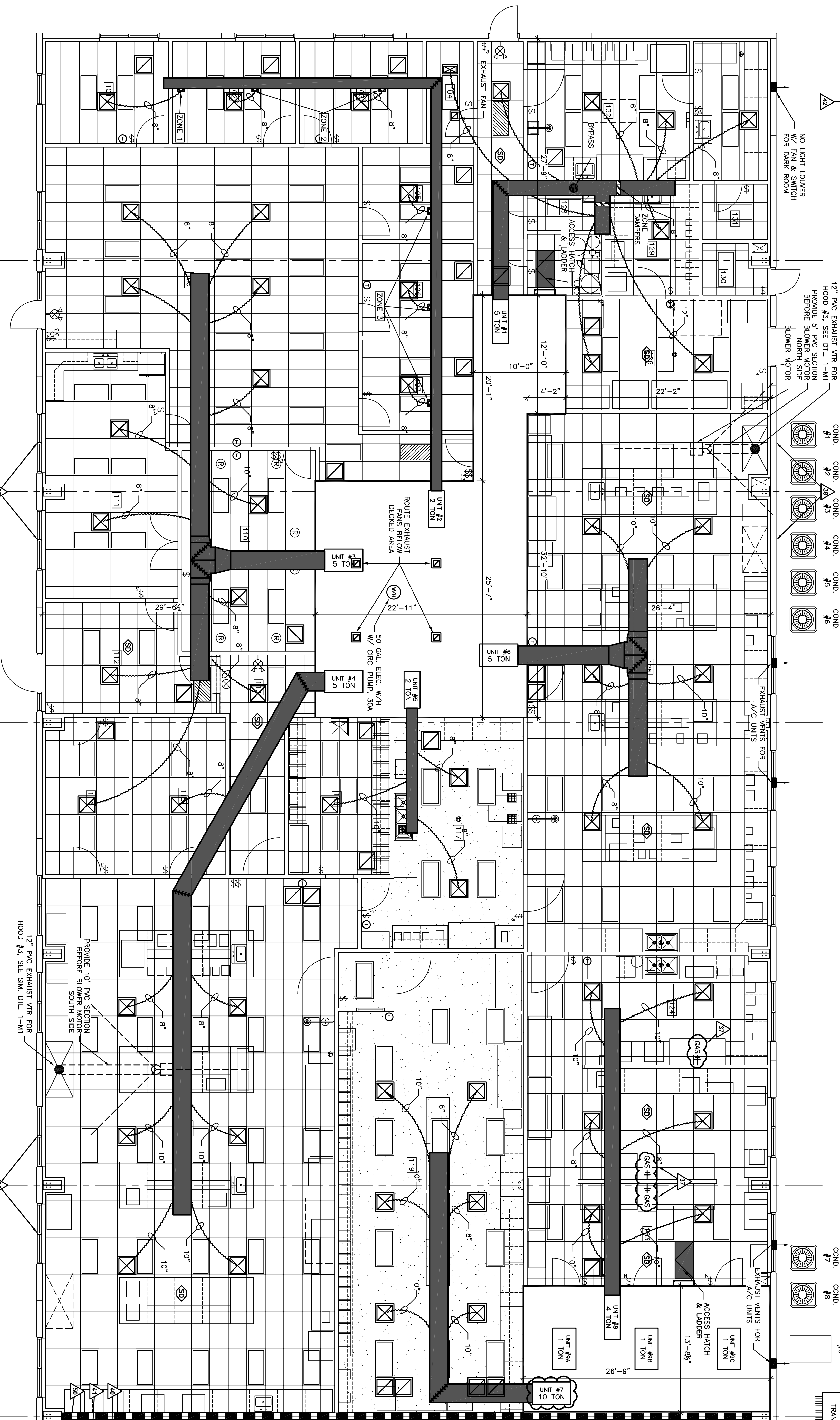


CONDENSING UNITS				COIL		HYAC UNITS				FURNACE								
UNIT	BRAND	MODEL #	TONNAGE	COOL CAP. (BTUH)	MAX FUSE	PHASE	VOLTS	MODEL #	MODEL #	HIG. CAP. (BTUH)	TYPE	FURNACE	VOLTS	VENT	MAX FUSE	REQ. DUCT DETECTORS	TEMP REQ.	WARRANTY
1	CARRIER	24ACB360A005	5	60,000	40 A	3Ø	208/230 V	CNPH6024M1A	585T1A35122	90,000	GAS	SINGLE	115 V	4"	---	X	70°F	10YR.
2	CARRIER	24AB334A003	2	24,000	30 A	1Ø	208/230 V	CNPH2417M1A	585T1A35122	45,000	GAS	SINGLE	115 V	4"	---	---	71-72°F	10YR.
3	CARRIER	24ACB360A005	5	60,000	40 A	3Ø	208/230 V	CNPH6024M1A	585T1A35122	120,000	GAS	SINGLE	115 V	4"	---	X	71-72°F	10YR.
4	CARRIER	24ACB360A005	5	60,000	40 A	3Ø	208/230 V	CNPH6024M1A	585T1A35122	120,000	GAS	SINGLE	115 V	4"	---	X	71-72°F	10YR.
5	CARRIER	24AB334A003	2	24,000	30 A	1Ø	208/230 V	CNPH2417M1A	585T1A35122	45,000	GAS	SINGLE	115 V	4"	---	---	71-72°F	10YR.
6	CARRIER	24ACB360A005	5	60,000	40 A	3Ø	208/230 V	CNPH6024M1A	585T1A35122	120,000	GAS	SINGLE	115 V	4"	---	X	71-72°F	10YR.
7	CARRIER	24ACB360A005	10	120,000	40 A	3Ø	208/230 V	CNPH6024M1A	585T1A35122	120,000	GAS	SINGLE	115 V	4"	---	X	70°F	10YR.
8	CARRIER	24ACB360A005	4	48,000	30 A	3Ø	208/230 V	CNPH48201A1A	585T1A20116	90,000	GAS	SINGLE	115 V	4"	---	---	71-72°F	10YR.
9	LIBERTY	PS0484-VB2	4	48,000	35 A	3Ø	208/230 V	OS311AU	OS311AU	12,000	ELEC.	SINGLE	115 V	---	35 A	---	82.4°F/31°F	1YR.
								OS311AU	OS311AU	12,000	ELEC.	SINGLE	115 V	---	35 A	---	82.4°F/31°F	1YR.

MECHANICAL SYMBOLS	
<input checked="" type="checkbox"/>	2x2 SUPPLY GRILLE
<input checked="" type="checkbox"/>	2x2 RETURN AIR GRILLE
<input checked="" type="checkbox"/>	EXHAUST FAN - PROVIDED BY ELECTRICIAN INSTALLED BY HVAC CONTRACTOR
<input checked="" type="checkbox"/>	THERMOSTAT - XCI MODEL #ST-1

NOTE: EQUIP. PROVIDED BY FITTING CONTRACTOR. FLASHING, GUY Wires, HANGING PLUMBING PROVIDED BY HVAC CONTRACTOR.



- MECHANICAL NOTES:**
1. FLEX DUCT NOT TO EXCEED 8'.
  2. ALL MTL. DUCT TO BE INTERNALLY LINED.
  3. ELECTRICIAN TO PROVIDE 2x4 ELEC. BOX, MOUNTED HORIZ. @ 52" TO 6" TO TERMINATE 1/2" CONDUIT ABV. CEILING. MECHANICAL CONTRACTOR TO PROVIDE & INSTALL ALL CONTROL WIRING FOR HVAC EQUIPMENT.
  4. ALL DUCT SHOWN IS SUPPLY AIR. ALL RETURN AIR DUCT IS TO BE MOUNTED DIRECTLY ABOVE SUPPLY. R/A DUCTWORK NOT SHOWN.
  5. ROUTE 24x12 LINED RETURN AIR DUCT FROM R/A GRILLE TO AHU TYP.
  6. ROUTE CONDENSATE OVERFLOW DRAIN OUT NORTH EXT. WALL.
  7. ROUTE PRIMARY CONDENSATE DRAIN TO NEAREST SANITARY SEWER LOCATION.
  8. ELECTRICIAN TO PROVIDE INDIVIDUAL SHUT-OFFS FOR LIGHTING & HVAC FOR EACH TISSUE CULTURE ROOM WHEN TEMPERATURE CANNOT BE MAINTAINED. HVAC CONTRACTOR TO PROVIDE TEMP. SENSORS & HOOKED UP TO ALARM SYSTEM BY ALARM SYSTEM CONTRACTOR.
  9. HVAC CONTRACTOR TO EXTEND PVC DUCT FROM TOP OF HOODS TO ROOF MOUNTED BLOWER. SEE DTL. 1-411.
  10. HVAC FRESH AIR VENTS TO BE THRU ROOF AS REQ.
  11. ROOF FILTER BAGS ON ALL HVAC UNITS W/ HVAC DOORS. FILTER BAGS W/ DISP. MEDIA.

**Wilkerson**  
PROPERTIES INC.

Commercial & Industrial Development, Management & Brokerage  
Phone: (806) 474-2223  
Fax: (806) 474-2216  
501 E. 66th Street  
Lubbock, Texas 79404

SANTA FE PARK-LOT 33-SUITE 500  
Lubbock, Texas 79407

Date: 10/24/2008  
Drawn by: JMT, JMS, MRK  
Checked by: PET

Rev: 11/17/2008

Notes:

**MECHANICAL PLAN**  
SCALE: 3/8" = 1'-0"

Approved by:

Approved by:

**M1**