

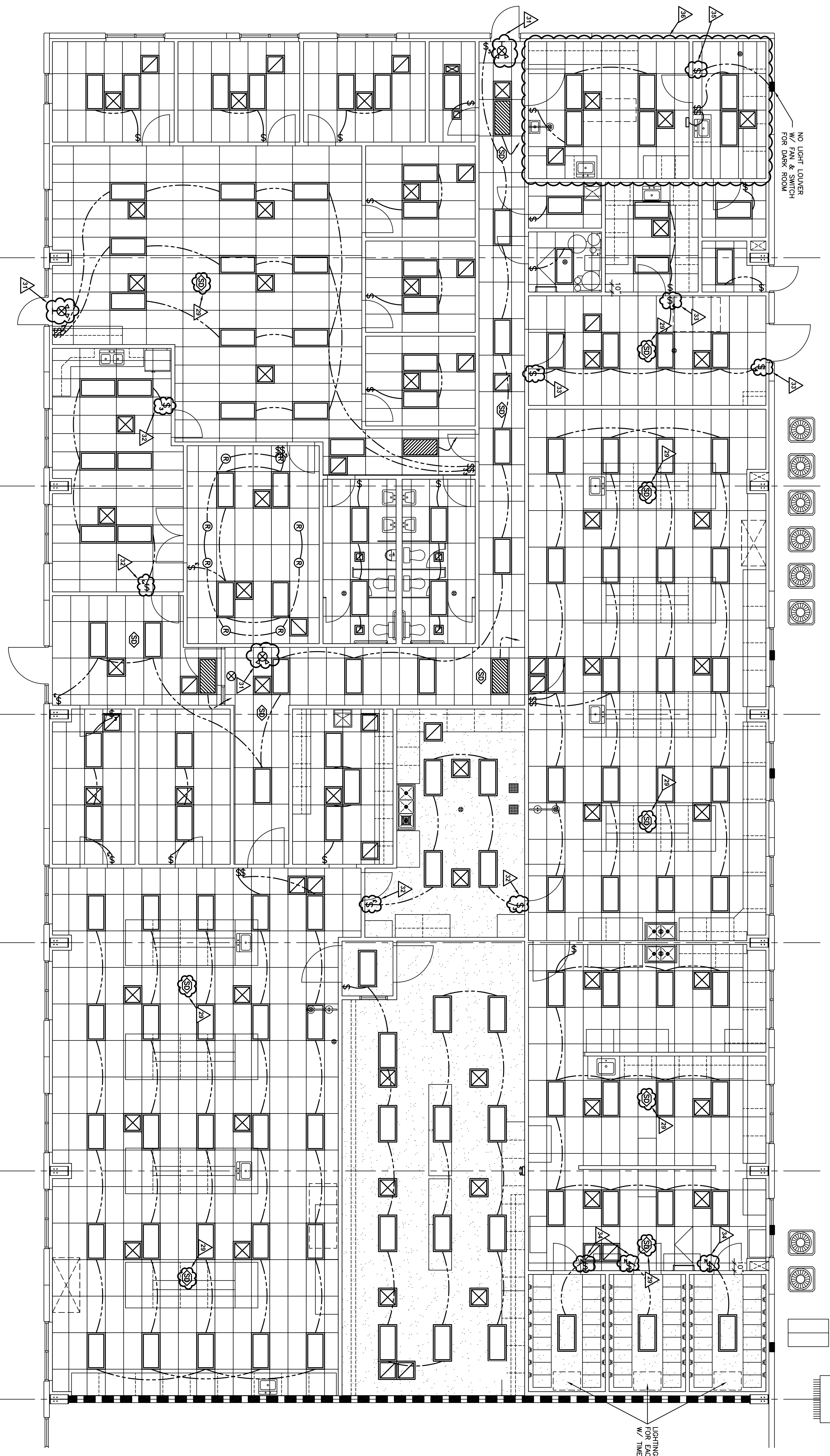
LIGHTING SYMBOLS

	2x4 FLUORESCENT FIXTURES
	NIGHT LIGHT CONSTANT POWER CONNECT TO PANEL
	2x2 FLUORESCENT FIXTURES
	BATTERY PACK EMERGENCY LIGHTING
	EXIT LIGHT
	EXIT LIGHT W/ BATTERY PACK LIGHTING
	INCANDESCENT CEILING LIGHT
	SOFTIE CAN LIGHTING
	SMOKE DETECTOR BY FIRE ALARM CONTRACTOR
	GROW LIGHTS - (2) 4 VERT. FIXTURES 2 BULBS W/ ELEC. BALLASTS, 16.5" SPACING, PHILIPS MASTER TL-D-36W/840

SWITCHING SYMBOLS

	SINGLE SWITCH
	3-WAY - SWITCHED FROM 2 POINTS
	4-WAY - SWITCHED FROM 3 POINTS
	DIMMER SWITCH
	SINGLE SWITCH W/ INDICATOR LIGHT

REFLECTED CEILING PLAN
 SCALE 3/16" = 1'-0"



ACCESSIBILITY COMPLIANCE NOTES

1. LIGHT SWITCH MOUNTING HEIGHTS FOR WHEELCHAIR ACCESS:
 - 48" FOR FORWARD APPROACH OR
 - 54" FOR SIDE APPROACH
 ABOVE FLOOR TO CENTRELINE OF SWITCH.

CEILING LEGEND

	LAY-IN CEILING GRID
	DRYWALL CEILING

