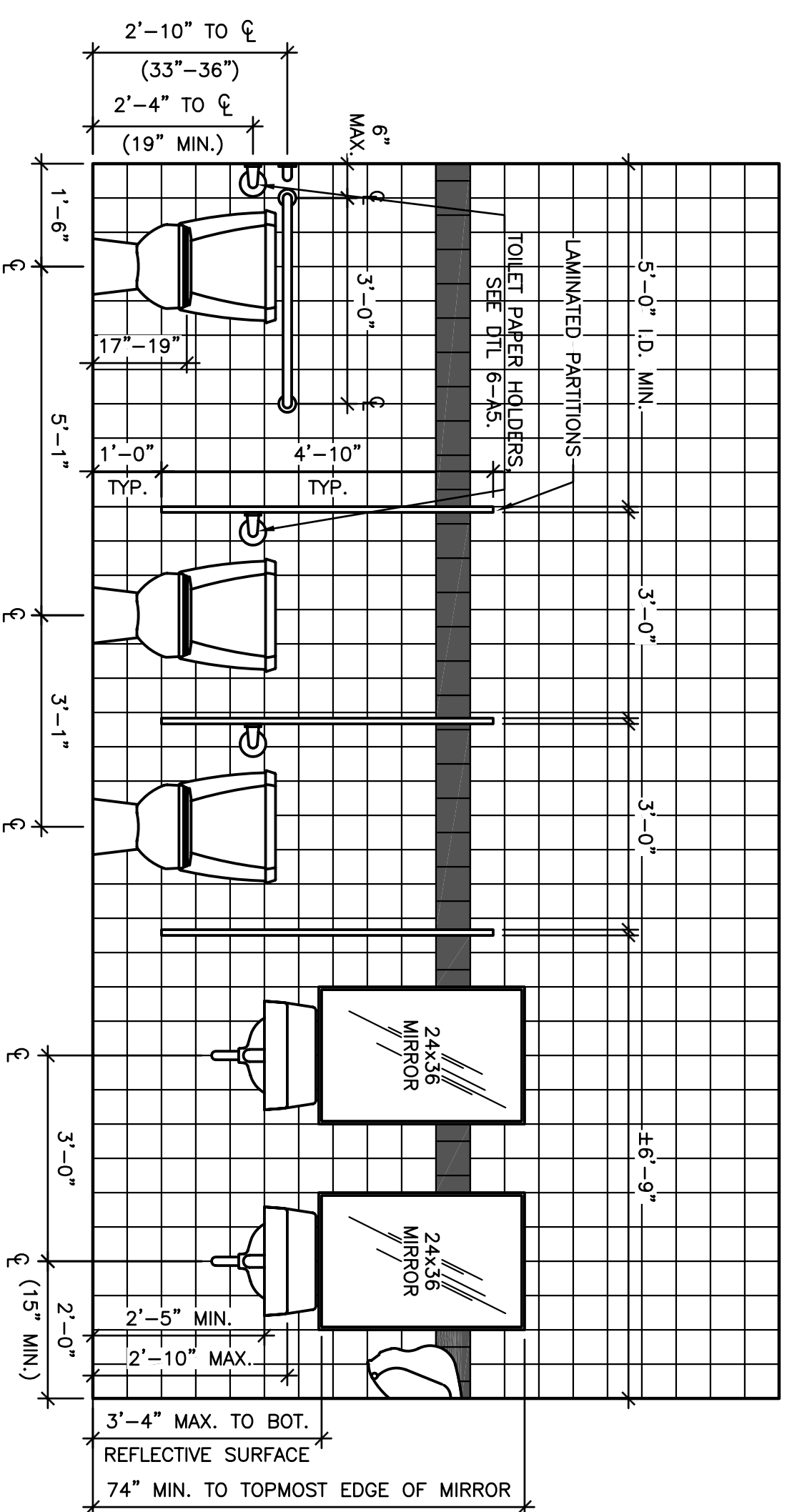
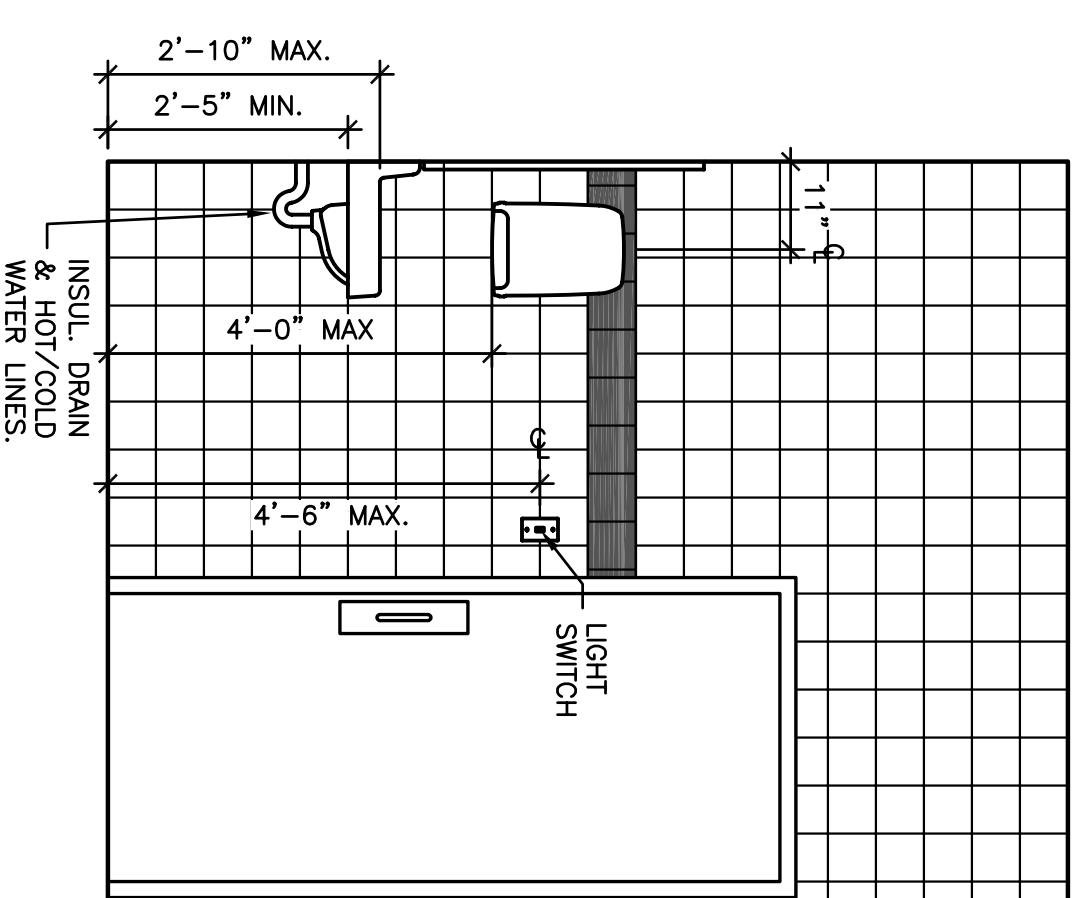


6 ELEVATION
SCALE: 1/2" = 1'-0"

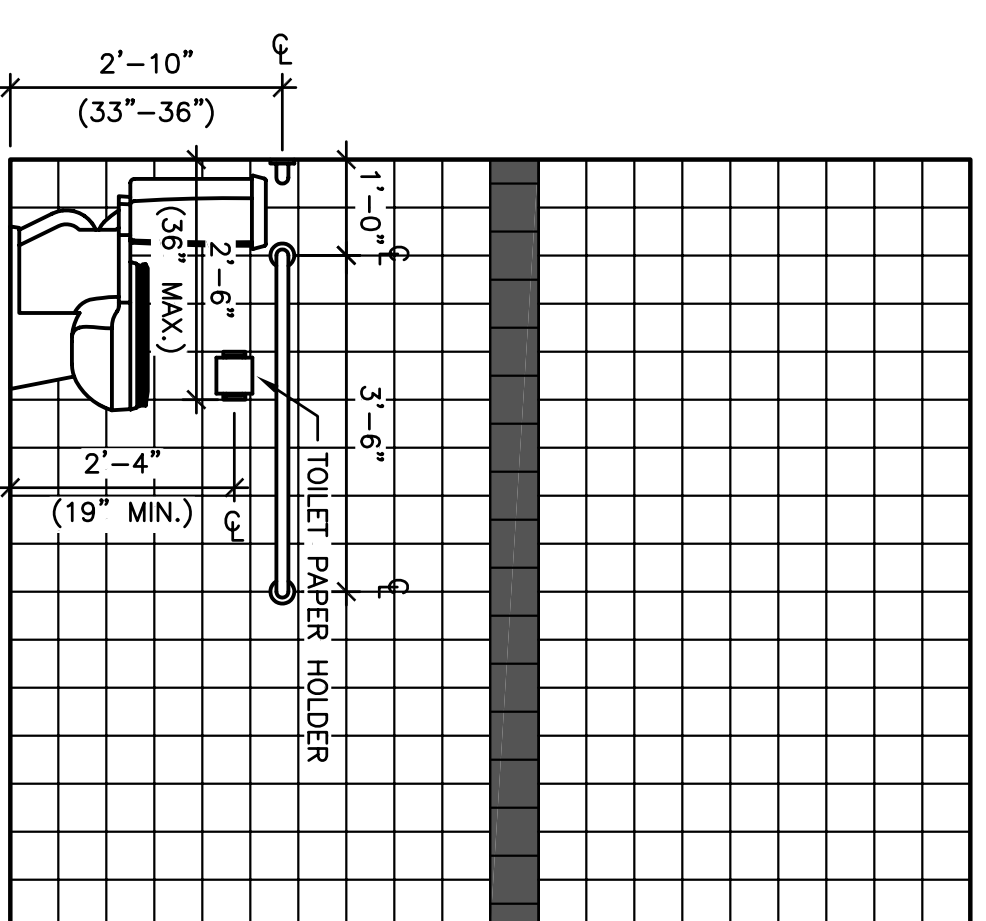


5 ELEVATION
SCALE: 1/2" = 1'-0"

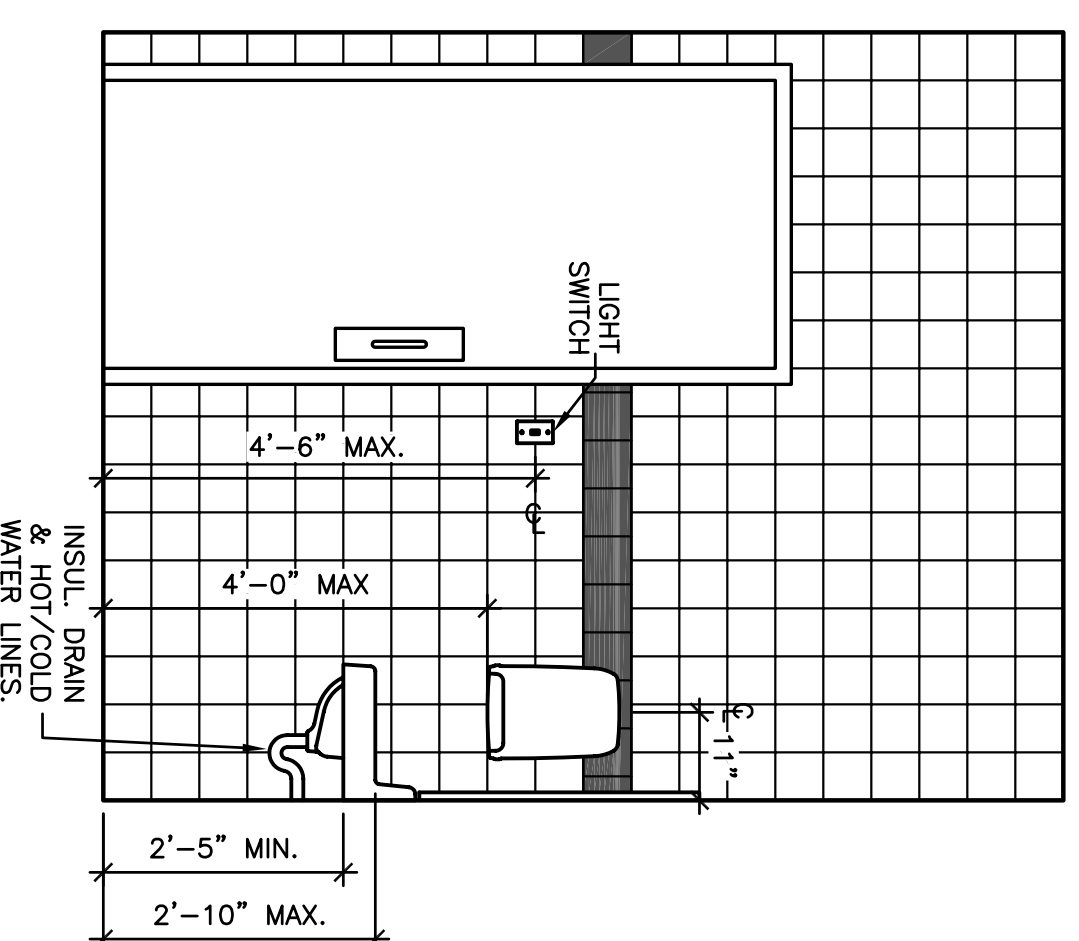


4 ELEVATION
SCALE: 1/2" = 1'-0"

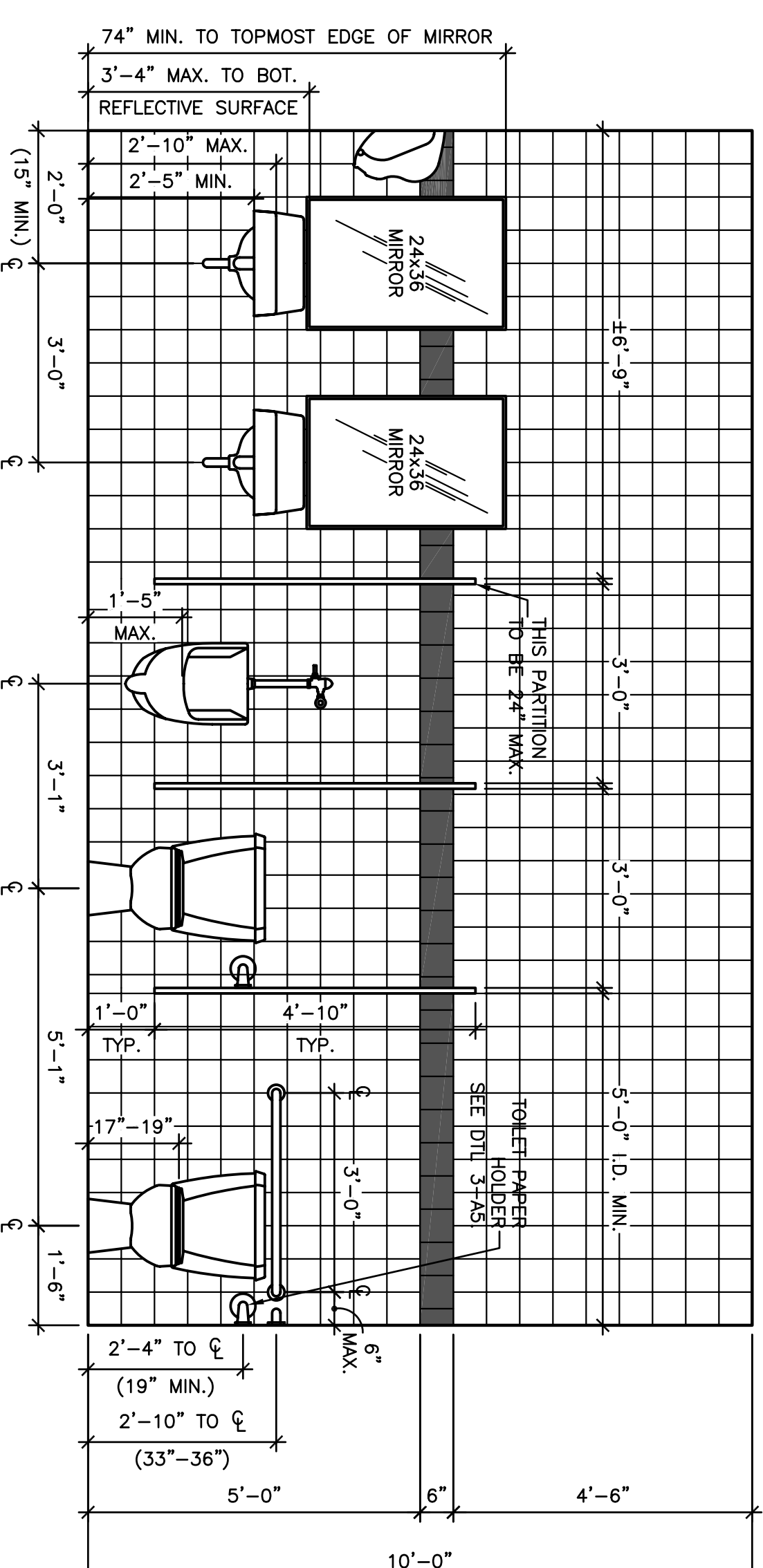
NOTE:
1. ALL WALL MOUNTED SINKS TO HAVE COVERS.
2. PAPER TOWEL & TOILET PAPER DISP. PROVIDED BY TENANT INSTALLED BY OWNER.



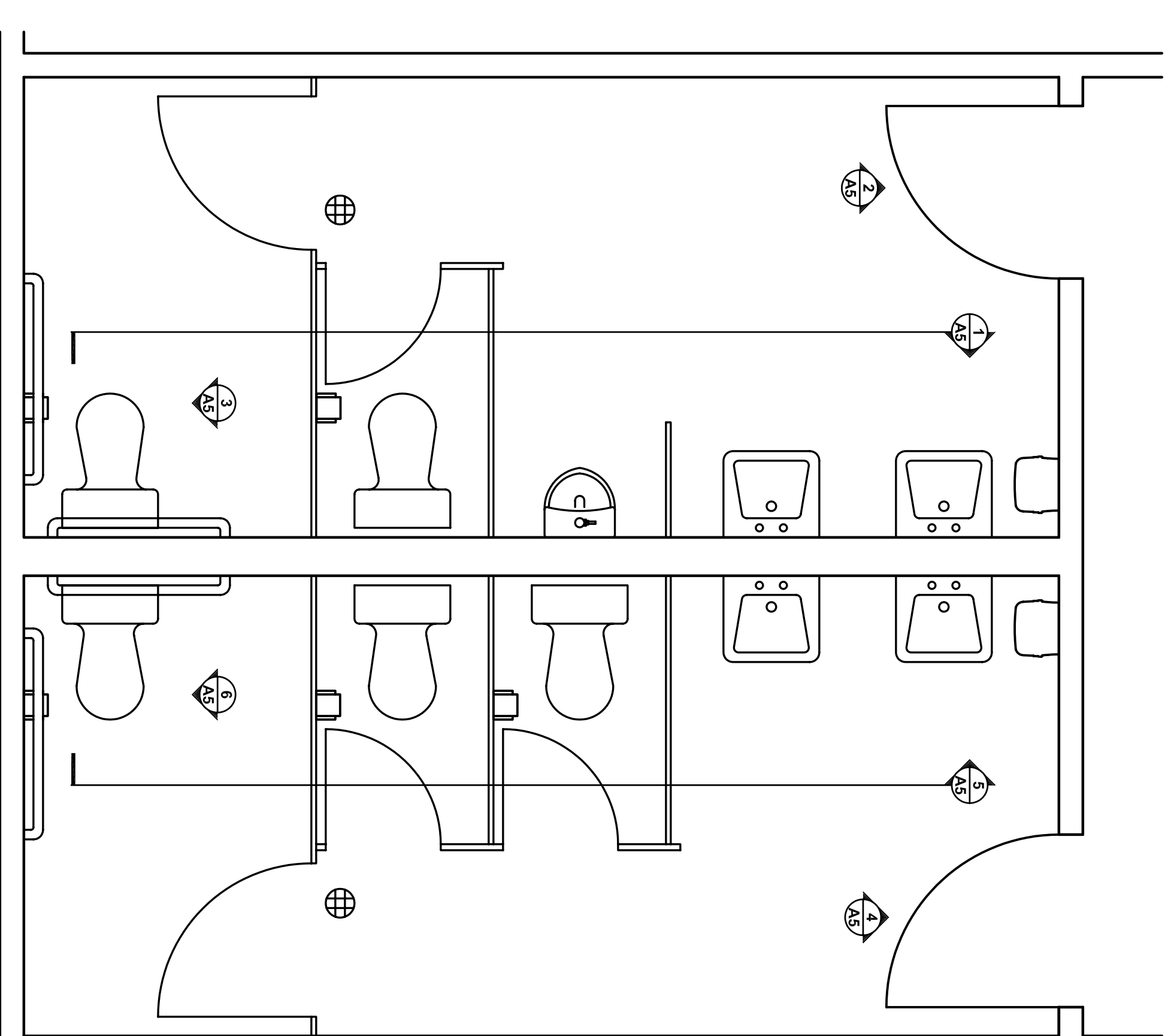
3 ELEVATION
SCALE: 1/2" = 1'-0"



2 ELEVATION
SCALE: 1/2" = 1'-0"



1 ELEVATION
SCALE: 1/2" = 1'-0"



BATHROOM FLOOR PLAN
SCALE: 1/2" = 1'-0"

TILE LEGEND

- WOMEN'S: DALTILE WATERFALL 0169 6"x6"
- MEN'S: DALTILE URBAN PUDDY 1081 6"x6"
- ACCENT TILE: DALTILE WHITE 0100